



## Correspondence

### CORRESPONDENCE FOR INFORMATION

1. 1394626 \* 317  
Lower Burdekin Landcare Association Inc  
  
Minutes of Lower Burdekin Landcare Association Annual General Meeting - 11 November 2014.
2. 1394679 \* 449  
Local Government Association Of Qld Ltd - LGAQ  
  
LGAQ Circular - 2014-088 - Queensland Plan Now Enshrined in Legislation.
3. 1395089 \* 464  
Local Government Association Of Qld Ltd - LGAQ  
  
10 Point Election Policy Plan.
4. 1396134 \* 464  
Local Government Association Of Qld Ltd - LGAQ  
  
Launch of Better Councils, Better Communities.
5. 1396170 \* 147  
Burdekin Art Society Inc  
  
Letter of Acceptance - Council Chambers Artspace.
6. 1396472 \* 925  
Burdekin Neighbourhood Centre Association Inc  
  
Letter of Thanks - 2014/2015 Annual Donation.
7. 1396687 \* 411  
Campbell Newman - Premier Of Queensland  
  
The Queensland Plan Act 2014 - 27 October 2014.
8. 1397475 \* 449  
Local Government Association Of Qld Ltd - LGAQ  
  
LGAQ Circular - 2014-089 - Proposed Arts and Culture Conference - Feedback Request.

9. 1397676 \* 925  
Victoria Racing Club Limited  
  
Letter of Thanks - Emirates Melbourne Cup Visit.
10. 1397812 \* 1224  
Economic Development Strategic Advisory Group - EDSAG  
  
Minutes of Economic Development Strategic Advisory Group Meeting - 11 September 2014.
11. 1398282 \* 446  
Museum Of Tropical Queensland  
  
Museum of Tropical Queensland Council Community Pass 2013-2014.
12. 1399146 \* 468  
Hon Andrew Cripps Mp - Minister For Natural Resources And Mines  
  
Flood Ready Queensland - Flood Mapping Implementation Kit.
13. 1399182 \* 103  
Giru State School Parents & Citizens (P & C) Association  
  
Request for Additional Financial Assistance - Giru Pool.
14. 1400010 \* 402  
Local Government Association Of Qld Ltd - LGAQ  
  
Release of New Course - Diploma of Local Government (Elected Member).



**From:** [LBLCA Secretary](#)  
**To:** [Secretary@LowerBurdekinLandcare.org.au](mailto:Secretary@LowerBurdekinLandcare.org.au)  
**Subject:** Minutes of LBLCA AGM 11 November 2014  
**Date:** Tuesday, 18 November 2014 2:06:02 PM  
**Attachments:** [image001.png](#)  
[AGM Minutes 11 November 2014.doc](#)  
[LBLCA financial papers 2013-14.pdf](#)

---

Thank you everyone who attended our Wonderful Wetland Activities on 11 November 2014.

The Launch of the Nursery Wetland Treatment Train and Real Time Water Testing Unit Demonstration was well received and we had a full bus for the tour of Wetlands in the Burdekin. There was great attendance at our BBQ, AGM and Launch of our new field guide *Wetland Plants of the Townsville-Burdekin Floodplain*. Thank you to everyone who made the day possible.

Lower Burdekin Landcare welcomes new Chairperson Keith Kiloh, new Treasurer Dan Donovan and new Vice Chair Tom McShane. Brooke Corrie has retired from office. A copy of the draft minutes of the AGM are attached together with the financial report.

Kind regards

**Linda Kirk**

Secretary

**Lower Burdekin Landcare Association Inc.**

Telephone: 0415 307 364

PO Box 1280, Ayr Qld 4807

Email: [Secretary@LowerBurdekinLandcare.org.au](mailto:Secretary@LowerBurdekinLandcare.org.au)

Website: [www.LowerBurdekinLandcare.org.au](http://www.LowerBurdekinLandcare.org.au)

Facebook: <https://www.facebook.com/LowerBurdekinLandcare>

*I work on a part-time basis usually Monday, Tuesday & Wednesday 8.30am-3.00pm*



---

This email has been scanned by the Symantec Email Security.cloud service.  
For more information please visit <http://www.symanteccloud.com>

---

Minutes of the Annual General Meeting  
Lower Burdekin Landcare Association Inc  
Tuesday 11<sup>th</sup> November 2014, 6.30pm  
Burdekin Library

<b>Meeting opened</b>	6.45pm	Action
<b>Present</b>	Brooke Corrie (Vice Chair), Linda Kirk (Secretary), Ross Gelling (Nursery Manager), Tom McShane (Chair), Dan Donovan, Rowan Scott, Carli Rocco NQDT, Greg Calvert, Marilyn Neville, Pat Neville (Life Member), Joan Andersen, Benjamin Devow Gudjuda, Teresa Lever, Adrian Scott BSC, Carol Douglas, Paul Douglas, Graham Andersen (Life Member), Glenis Cislowski, Carla Wegscheidl DAFF, Joe Tallis Gudjuda, Chris Kahler NQDT, Scott Fry NQDT, Merv Pyott WCA, Russ McNee ICGO, Matthew Magin BSC, Paul Turnbull Wilmar, Mayor Bill Lowis BSC, Terri Buono, Uli Liessmann BSC, Jaymie Rains NQDT, Christine Dalliston CDTLI, Peter Arthofer NQDT, Keith Kiloh (Treasurer), Russell Kirk, Jan Gendrolius, Linda Govan, Carol Williams, Ron Williams	
<b>Apologies</b>	Pierina Dalle Cort, Kevin Mann, Senator Ian Macdonald	
<b>Minutes from previous Annual General Meeting</b>	The Chair invited members to read the minutes of the AGM held on 2 <sup>nd</sup> December 2013. Moved Joan Andersen, seconded Rowan Scott that the minutes be accepted as a true and accurate record of the meeting. Carried.	
<b>Business Arising from Minutes</b>	Nil	
<b>Chair's Report</b>	<p>Chair Tom McShane reported on the activities undertaken throughout the year and expressed his thanks to members and volunteers whose contributions keep our group going.</p> <p>Volunteers had contributed a massive 1290 volunteer hours in the 2012-13 year. Karen Kerr, our Nursery Manager had the Nursery in great shape. 2552 trees had been sold and 155 Burdekin Delta Tree Guides.</p> <p>Please see attached report.</p>	
<b>Financial Report</b>	<p>The audited Financial Statements for the financial year ended 30th June, 2014 were tabled. These included:-</p> <ul style="list-style-type: none"> <li>• Detailed Profit &amp; Loss Statement</li> <li>• Detailed Balance Sheet</li> <li>• Notes to the Financial Statements</li> <li>• Independent Audit Report to the members</li> <li>• Bank Reconciliation</li> </ul> <p>K Kiloh moved the acceptance of the Financial Report, seconded Merv Pyott. All in favour. Carried.</p>	
<b>Election of Office Bearers</b>	<p>For the purpose of the election of Office Bearers Tom McShane vacated the Chair in favour of Graham Andersen</p> <p>As per our constitution all members of the management committee retire from office, but are eligible, on nomination, for re-election. The management committee of the association must consist of Chairman, Vice Chairman and Treasurer.</p> <p><b>Chairman:</b> No written nominations for Chair were received. G Andersen called for nominations from the floor.</p>	



	<p>Merv Pyott nominated Keith Kiloh. After some consideration and discussion K Kiloh accepted the nomination. In the absence of further nominations Keith Kiloh was declared elected.</p> <p><b>Vice Chairman:</b> No written nominations for Vice Chair were received. G Andersen called for nominations from the floor. M Pyott nominated Tom McShane. T McShane accepted the nomination. In the absence of further nominations Tom McShane was declared elected.</p> <p><b>Treasurer:</b> No written nominations for Treasurer were received. G Andersen called for nominations from the floor. G Andersen nominated Brooke Corrie. B Corrie declined. G Andersen nominated Dan Donovan. D Donovan accepted the nomination. In the absence of further nominations Dan Donovan was declared elected.</p> <p>The position of Secretary will continue to be filled by Linda Kirk. As per the LBLCA Constitution, this position does not form part of the elected Management Committee.</p> <p>Keith Kiloh took the position of chair for the remainder of the meeting.</p>	
<b>Nomination of Auditor</b>	<p>It was moved by L Kirk that our general audit for 2014-15 be undertaken by Fahey &amp; Ponti</p> <p>Seconded by K Kiloh. All in favour. Carried.</p>	
<b>General Business</b>	Nil	
<b>Meeting closed</b>	7.16 p.m. for the commencement of the Launch of the book <i>Wetland Plants of the Townsville-Burdekin Floodplain</i>	

Approved:\_\_\_\_\_Date:\_\_\_\_\_

## **LBLCA Chairs Report 2014 AGM**

### **Project & Activities**

- Ross Gelling Employed.  
Employment of new Nursery Manager Ross Gelling
- Recruitment of Volunteers  
A solid group of volunteers willing gave their time and energy to assist with the various nursery activities (1850hrs)
- Engaged Employment Seekers.  
We have engaged with Job Futures and Max Employment to host work for the dole participants and are registered with Centrelink, Seek Employment and Go Volunteer to host volunteers needing to complete “mutual hours”
- WCA for the Barratta Creek Catchment Management Project.  
Continuation of partnership with WCA for the Barratta Creek Catchment Management project - 30 ha revegetated with LBLCA supplying 30,000 plants over 3 years. 3000 supplied in 2013, 12,000 for 2014 (6,000 out 6,000 to go), and 15,000 in 2015.
- Treatment train Model Wetland.  
Construction of Artificial Wetland/Water Treatment Train in Nursery in collaboration with GBRMPA, NQ Dry Tropics, BBIFMAC, Wetlandcare Australia, DAFF, Burdekin Shire Council
- Local Landcare Markets  
Hosted successful stalls at the local Markets – getting the word out about the nursery and benefits of using natives in home gardens
- National Tree Day Activities  
National Tree Day with Burdekin Shire Council at Plantation Park Juru Walk. Water Festival Ambassadors, Scouts, Burdekin Catholic High School, members of the public and NQ Dry Tropics. 113 volunteers planted 1000 trees.  
NQ Dry Tropics funding has enabled maintenance of this planting until January 2015 to ensure the long term survival of the site
- Greenhouse Relocated.  
Greenhouse donated to LBLCA was disassembled and reassembled in the Nursery
- GBRMPA Reef Guardian Schools Future Leaders Eco-Challenge  
GBRMPA Reef Guardian Schools Future Leaders Eco Challenge involving 4 schools and 42 participants. Supported by LBLCA, NQ Dry Tropics, Gudjuda, DAFF, Greening Australia & GBRMPA. Students were challenged to learn new skills & knowledge to share with other students upon returning to their schools. Activities included: Planting Seeds, Potting Up Seedlings, Find & Seek & Identifying Plants, Tour & History of Juru Walk, Identify Plants & understanding importance of Biodiversity in the environment, Traditional Plant Uses, Tree Planting 150 Trees Juru Walk.
- Endeavour Participation.  
Endeavour commenced regular propagation sessions in the Nursery on Tuesdays
- Wetland Plant Book  
Production of field guide Wetland Plants of the Townsville-Burdekin Floodplain which will be launched later this evening (funded by DAFF through the Queensland Wetlands Program, Burdekin Shire Council’s Environmental Levy Fund and NQ Dry Tropics, plus a large array of in-kind contribution)

### **Statically**

- ❖ Recorded Volunteer Hours 2013-14 were 1850 hours
- ❖ Number of Trees Sold 2013-14 financial year were 5616. Since June 2014 to now 8051
- ❖ Number of Tree Guides Sold 2013-14 were 21

## **The Year Ahead - 2015**

- **Everyones Environment Application.**  
We have applied for an Everyone's Environment Grant to continue with weed removal and revegetation along Plantation Creek in Plantation Park Juru Walk.
- **20 Million Trees Program Grant.**  
We have applied to the 20 Million Trees Program for Rehabilitation and Revegetation of a section of Sheep Station Creek. Farmer interest in the project outstripped the funds available through this program so we have partnered with NQ Dry Tropics to complete works on the additional farms through Scott Fry's 'Restoring Burdekin Coastal ecosystems for Great Barrier Reef & Ramsar' project.
- **Green Army Team Application.**  
We are applying to secure a Green Army Team to provide a team of 10 workers to help complete these projects and other on-ground works.
- **Wetlandcare Australia Trees.**  
We will grow 15,000 trees for Wetlandcare Australia's Barratta's project

**LOWER BURDEKIN LANDCARE  
ASSOCIATION INC.  
ABN: 15 782 114 250**

**MANAGEMENT REPORT  
FOR THE YEAR ENDED  
30 JUNE 2014**

**LOWER BURDEKIN LANDCARE  
ASSOCIATION INC.  
ABN: 15 782 114 250**

**CONTENTS**

Detailed Profit and Loss Statement

Detailed Balance Sheet

Notes to the Financial Statements

Auditors' Report

Bank Reconciliations

**LOWER BURDEKIN LANDCARE  
ASSOCIATION INC.  
ABN: 15 782 114 250**

**PROFIT AND LOSS STATEMENT  
FOR THE YEAR ENDED 30 JUNE 2014**

	Note	This Year \$	Last Year \$
<b>SALES</b>			
Burdekin Delta Tree Guide Sales		298.19	2,003.48
Tree Sales		5,507.51	5,052.27
Sales Other		8,636.00	1,181.82
		<u>14,441.70</u>	<u>8,237.57</u>
<b>LESS: COST OF GOODS SOLD</b>			
Opening Stock		10,278.80	-
Purchases Tree Guides		-	10,278.80
Closing Stock		<u>(10,123.96)</u>	<u>-</u>
		154.84	10,278.80
<b>GROSS PROFIT (LOSS) FROM TRADING</b>		<u>14,286.86</u>	<u>(2,041.23)</u>
<b>OTHER INCOME</b>			
Income	2	4,039.72	4,798.26
Grants	3	41,639.09	-
WCA Barratta Project	4	11,960.00	1,750.00
		<u>57,638.81</u>	<u>6,548.26</u>
		<u>71,925.67</u>	<u>4,507.03</u>

The accompanying notes form part of these financial statements.

**LOWER BURDEKIN LANDCARE  
ASSOCIATION INC.  
ABN: 15 782 114 250**

**PROFIT AND LOSS STATEMENT  
FOR THE YEAR ENDED 30 JUNE 2014**

	Note	This Year \$	Last Year \$
<b>EXPENSES</b>			
Administration Costs	5	1,824.84	1,639.58
Auditor's Fees		605.00	263.00
Bad Debts Written Off		-	420.00
Bank Charges		(1.47)	15.00
Conference Member Attend. Exp.		304.55	-
Demonstration Wetland		32.58	-
Fees & Permits		203.37	65.91
Fuel & Oil		122.16	-
Insurance	6	707.49	488.78
Juru Walk Enviro Grant Expense		-	1,519.71
Nursery & Plant Expenses		4,379.86	2,733.32
OLG Breakwater Island Grant Exp.		3,155.50	-
Postage		76.82	14.59
Purchase Tree Guides		-	22.11
Registration Fees		77.10	170.25
Repairs & Maintenance		37.27	30.00
Superannuation Contributions - Employees		2,862.42	1,704.40
Telephone		110.00	87.27
Travelling Expenses		200.00	200.00
Wages		31,705.94	19,666.92
Wetland Plant Field Guide		15,000.00	-
Workshop Expenses		245.45	-
		<u>61,648.88</u>	<u>29,040.84</u>
<b>Profit (Loss) before income tax</b>		<u><u>10,276.79</u></u>	<u><u>(24,533.81)</u></u>

The accompanying notes form part of these financial statements.

**LOWER BURDEKIN LANDCARE  
ASSOCIATION INC.  
ABN: 15 782 114 250**

**STATEMENT OF FINANCIAL POSITION  
AS AT 30 JUNE 2014**

	Note	This Year \$	Last Year \$
<b>MEMBER'S FUNDS</b>			
LOWER BURDEKIN LANDCARE ASSOCIATION INC	7	135,169.70	114,614.11
<b>TOTAL MEMBER'S FUNDS</b>		<u>135,169.70</u>	<u>114,614.11</u>
Represented by:			
<b>CURRENT ASSETS</b>			
Nursery Float		20.00	20.00
Petty Cash Fund		150.00	150.00
NAB Term Deposits		63,596.13	62,985.92
Cash at Bank NAB Cash Manager Account		4,319.60	3,369.14
Cash at Bank NAB Community Group Account		29,862.23	2,756.69
Westpac Business Cash Reserve		29,294.50	44,311.93
Westpac Conference Account		37.29	38.31
Trade Debtors		2,378.25	1,925.00
Inventory Asset		10,123.96	-
<b>TOTAL CURRENT ASSETS</b>		<u>139,781.96</u>	<u>115,556.99</u>
<b>TOTAL ASSETS</b>		<u>139,781.96</u>	<u>115,556.99</u>
<b>CURRENT LIABILITIES</b>			
Amounts Withheld from Wages		1,574.00	689.00
GST Payable		3,038.26	253.88
<b>TOTAL CURRENT LIABILITIES</b>		<u>4,612.26</u>	<u>942.88</u>
<b>TOTAL LIABILITIES</b>		<u>4,612.26</u>	<u>942.88</u>
<b>NET ASSETS</b>		<u>135,169.70</u>	<u>114,614.11</u>

The accompanying notes form part of these financial statements.



**LOWER BURDEKIN LANDCARE  
ASSOCIATION INC.  
ABN: 15 782 114 250**

**NOTES TO THE FINANCIAL STATEMENTS  
FOR THE YEAR ENDED 30 JUNE 2014**

	This Year \$	Last Year \$
<b>1 Statement of Significant Accounting Policies</b>		
This financial report is a special purpose financial report prepared for use by the members of the Association.		
The financial report is prepared on an accruals basis and is based on historic costs and does not take into account changing money values or, except where specifically stated, current valuations of non-current assets.		
<b>2 Income</b>		
Donations Received	106.00	4.22
Interest Received	3,543.72	4,554.04
Membership	390.00	240.00
	<u>4,039.72</u>	<u>4,798.26</u>
<b>3 Grants</b>		
Burdekin Shire Council Enviro	20,000.00	-
DAFF Wetland Plant Field Guide	15,000.00	-
OLAG Breakwater Laptop'13	3,730.00	-
Work For The Dole Program	2,909.09	-
	<u>41,639.09</u>	<u>-</u>
<b>4 WCA Barratta Project</b>		
Nursery Monitoring	3,500.00	1,750.00
Trees	5,460.00	-
Workshops	3,000.00	-
	<u>11,960.00</u>	<u>1,750.00</u>
<b>5 Administration Costs</b>		
Advertising	1,055.46	938.19
Meeting Room Expenses	118.18	189.16
Printing & Stationery	305.75	512.23
Software Licence	345.45	-
	<u>1,824.84</u>	<u>1,639.58</u>
<b>6 Insurance</b>		
Workcover	707.49	488.78
	<u>707.49</u>	<u>488.78</u>

**LOWER BURDEKIN LANDCARE  
ASSOCIATION INC.  
ABN: 15 782 114 250**

**NOTES TO THE FINANCIAL STATEMENTS  
FOR THE YEAR ENDED 30 JUNE 2014**

	This Year \$	Last Year \$
<hr/>		
<b>7 LOWER BURDEKIN LANDCARE ASSOCIATION INC</b>		
Balance at Beginning of Year	114,614.11	139,147.92
Inventory Asset Adjustment 2013	10,278.80	-
Profit for Year	10,276.79	(24,533.81)
	<u>135,169.70</u>	<u>114,614.11</u>

**INDEPENDENT AUDIT REPORT  
TO THE MEMBERS OF LOWER BURDEKIN LANDCARE  
ASSOCIATION INC.  
ABN: 15 782 114 250**

**Scope**

**The Financial Report**

The financial report comprises the statement of financial position, statement of financial performance, accompanying notes to the financial statements, and the members' declaration for LOWER BURDEKIN LANDCARE ASSOCIATION INC., for the year ended 30 June 2014.

**Audit Approach**

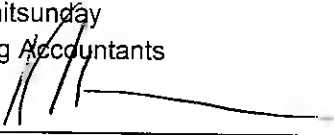
Our audit has been planned and performed in accordance with Australian Auditing Standards to provide a reasonable level of assurance as to whether the financial report is free of material mis-statement. Our procedures included examination, on a test basis, of evidence supporting the amounts and other disclosures in the financial report, and the evaluation of accounting policies and significant accounting estimates. These procedures have been undertaken to form an opinion whether, in all material respects, the financial report presents fairly in accordance with Australian Accounting Concepts and Standards so as to present a view of the LOWER BURDEKIN LANDCARE ASSOCIATION INC. which is consistent with our understanding of its operations.

The audit opinion expressed in this report has been formed on the above basis.

**Audit Opinion**

In our opinion, the financial report presents fairly in accordance with applicable Accounting Standards and other mandatory professional reporting requirements and statutory requirements in Australia, the financial position of LOWER BURDEKIN LANDCARE ASSOCIATION INC. as at 30 June 2014 for the year then ended.

**Name of Firm:** Fahey & Ponti Whitsunday  
Certified Practising Accountants

**Name of Director:**   
Kris Hansen

**Address:** 58A Herbert St, Bowen Qld 4805

**Dated this Ninth day of October 2014**

Ref: KH/DB/LBLA/AUDIT

**DIRECTORS**

J.F. FAHEY  
J.T. FINLAY  
K. HANSEN

**ASSOCIATES**

R. COLLINS  
A.C. DYNE  
M.J. PORTER

9<sup>th</sup> October, 2014.  
BOWEN

The President  
Lower Burdekin Landcare Association Inc.  
PO Box 1280  
AYR QLD 4807

Dear Sir,

Please find enclosed audited Financial Statements for the year ended 30 June, 2014.

We advise that for the 2013 audit we did not include a Stock on Hand for the Tree Guides purchased.  
Page 5 of the report shows the adjustment.

Should you have any queries please contact our office.

Yours faithfully,  
FAHEY & PONTI WHITSUNDAY

Per

**BOWEN**

PO Box 244, Bowen Qld 4805  
58A Herbert Street, Bowen Qld 4805

Phone (07) 4786 2200

Fax (07) 4786 2620

Email: bowen@faheyponti.com.au

ABN 83 158 129 143

**CANNONVALE**

PO Box 735, Cannonvale Qld 4802  
Suite 1, Conway House, 6 Island Drive,  
Cannonvale Qld 4802

Phone (07) 4948 1844

Fax (07) 4946 5427

Email: cannonvale@faheyponti.com.au

Incorporating

**FAHEY**  
WHITSUNDAY  
**PONTI**

# Circular

## Queensland Plan Now Enshrined In Legislation

### For Information

**Circular:** 2014-088  
**Release Date:** Tuesday, 18 November 2014  
**Authorised by:** Greg Hallam PSM Chief Executive Officer

The Queensland Plan Act 2014 is now law, and the LGAQ has clarified council obligations to ensure minimal administration when reporting on the Queensland Plan foundation areas.

Over the past 18 months, the LGAQ has participated in the policy development, formulation and drafting stages to ensure councils are able to participate in achieving the outcomes stipulated in the Queensland Plan, with flexibility as best suits their capacity and community. This was achieved through meetings and discussions, as well as formal correspondence on [19 March 2013](#), [30 August 2013](#), [7 March 2014](#) and [22 September 2014](#).

On 26 August, the Queensland Plan Bill 2014 was introduced by the Premier and referred to the Finance and Administration Committee.

The LGAQ provided a [submission](#) on the Bill and appeared before the [Committee](#), seeking confirmation on council obligations to have regard to the strategic direction of the Queensland Plan in their corporate plan and an annual report. The LGAQ proposed councils should be able to choose a fit for purpose arrangement that reflects their individual circumstances and capacity to respond to the Queensland Plan foundation areas. The Government confirmed that the term "have regard to [the Plan]" was not intended to be prescriptive, allowing councils to work within their scope to contribute to the Plan's outcomes.

The LGAQ also raised the need to ensure accurate and timely local government information for inclusion in the Premier's report to the Legislative Assembly. One suggestion is that council annual reports could readily provide the basis for council reports to the government (such as Whitsunday Regional Council's recently finalised [annual report](#), though these are dependent on the Auditor-General's release of audited financial statements. The Department for Local Government has [confirmed](#) that administrative steps will be taken for the department to directly gather the necessary information from councils. There are no penalties within the Act for non-compliance with the Queensland Plan. However, it is anticipated that councils that are able to demonstrate how they have addressed the objectives of the Queensland Plan within their corporate plans will more effectively position themselves in seeking support from the State Government for Queensland Plan aligned initiatives.



BURDEKIN SHIRE COUNCIL	
File ID No.	464
20 NOV 2014	
Document No.	
Retention Period	

17 November 2014

Cr Bill Lewis  
Mayor  
Burdekin Shire Council  
PO Box 974  
AYR QLD 4807

Dear Cr Lewis

I am pleased to enclose the Local Government Association of Queensland's 10 Point Election Policy Plan for the upcoming State poll. This was launched at the LGAQ Annual Conference 2014 in Mackay, following consultation with members and endorsed by the Policy Executive. We thank all of you who contributed and provided feedback during its development.

The plan represents the policy and legislative priorities that the LGAQ and its member councils believe should form part of an incoming government's agenda for the next term of the Queensland Parliament.

I will be seeking meetings and formal responses from each political party in the lead up to the State election. The LGAQ has also developed a media strategy beginning now to make sure that local government issues influence the political debate during election campaigning.

We encourage you, as Mayor and with your councillors, to think about how local government issues are raised and considered during the election campaign. You can do this perhaps by starting early to leverage local media relationships, social media and other free media outlets to write about your council's and communities' needs. I also encourage you to focus on the 10 Point Plan in your council newsletters and regular mayoral column.

The LGAQ will be highlighting each of the 10 points in the Local Yokel blog, through direct correspondence with the political parties, in an opinion piece, through ABC radio interviews and on social media.

By reinforcing these key messages in the 10 Point Plan over the next 6 months leading up to the election, let's do our best for Queensland local government and our communities.

If you would like to discuss media strategies and how we can help you, please contact Craig Johnstone, LGAQ's Media Executive, at either [Craig\\_Johnstone@lgaq.asn.au](mailto:Craig_Johnstone@lgaq.asn.au) or on 0487 007 870.

Yours sincerely

Cr Margaret de Wit  
PRESIDENT

*COPY & ATTACH ✓*

VIEW	MAYOR	AGENDA	C12
	CEO	DATE	16.12.14
NOTED		APPLIC #	
TENDER		PROP #	
ACTION		LAND #	
DEADLINE			

11 November 2014

Cr Bill Lewis  
Mayor  
Burdekin Shire Council  
PO Box 974  
AYR QLD 4807

Dear Cr Lewis

**Introducing: *Better Councils, Better Communities***

Financial sustainability remains the greatest challenge for Queensland's 77 local councils.

Funding from state and federal governments remains constrained and councils respect the impacts that rates, fees and charges have on residents. However, the costs for delivering infrastructure and services to our communities continues to rise.

Your Association recently commissioned market research into community, staff and elected member attitudes which identified concerns regarding 'value-for-money', lack of a clear vision and a desire for financial performance comparisons.

In short, local government is under growing financial pressure, it is having to respond to increased demand and it is struggling to meet community expectations.

What to do?

The answer lies within. At the recent LGAQ Annual Conference I announced the launch of *Better Councils, Better Communities*.

This local government initiated campaign has two primary goals

1. Encourage councils in partnership with others to consider new efficiency, productivity and innovation projects that will help improve financial sustainability.
2. Assist councils to better communicate achievements by promoting their existing good work and new initiatives to local communities.

By consolidating local initiatives under this one campaign Queensland councils have the opportunity to create a state-wide momentum for change as well as a valuable chance to tell their story to the community.

For a comprehensive campaign overview please call 1300 542 700 or visit the dedicated website on lg online: <http://www.lgaq.asn.au/group/better-councils>

I encourage your council to more fully consider the campaign goals at one of your up-coming meetings. This should help you identify existing examples (case studies) of local efficiency, productivity or innovation with which to share and, more importantly, consider what new projects your council may pursue in 2015/2016.



I would also encourage your council to be represented at the 2015 Finance Summit where we will discuss further the *Better Councils, Better Communities* financial sustainability message and the expected confidential release of the first financial performance benchmarking reports for your council. This campaign is intended to be a catalyst for ongoing reform and improved promotion of local government. We welcome your council's support.

Yours sincerely

A handwritten signature in cursive script that reads 'Margaret de Wit'.

Cr Margaret de Wit  
PRESIDENT

*Booklet 1/2*

VIEW	<i>MAYOR</i>	AGENDA	<i>C1 2</i>
		DATE	<i>9.12.14</i>
NOTED		APPLIC #	
TENDER		PROP #	
ACTION		LAND #	
DEADLINE			



Burdekin Art Society Inc

PO Box 312, Ayr, Qld 4807

25/11/14

Mr. Matthew Magin, C.E.O.,

Burdekin Shire Council,

PO Box ~~974~~

Ayr, Qld 4807

Dear Matthew,

The members of the Burdekin Art Society met recently and discussed the invitation by council to be involved in an artspace which may become available at council chambers in the new year. The members chose to accept this offer if and when you choose.

We wish to thank you for this new opportunity to display our work and also for the recent space provided to us in the waiting area near chamber offices.

With Regards,

Janet Ypinazar, Secretary,

Burdekin Art Society Inc.

BURDEKIN SHIRE COUNCIL	
File ID No.	147
25 NOV 2014	
Document No.	
Retention Period	

VIEW	CEO	AGENDA	C121
		DATE	9.12.14
NOTED		APPLIC #	
TENDER		PROP #	
ACTION		LAND #	
DEADLINE			

# BURDEKIN NEIGHBOURHOOD CENTRE ASSOC INC

**President:** K. Duggan  
**Secretary:** B. Garioch  
**Co-ordinator:** N. Saroglia

The Chief Executive Officer,  
Burdekin Shire Council,  
P.O. Box 974,  
AYR Q 4807

BURDEKIN SHIRE COUNCIL
File ID No. 925
26 NOV 2014
Document No.
Retention Period

Dear Matthew,

## Re: 2014/2015 Annual Donation

I would appreciate if you could convey, on behalf of all the team and members of the Burdekin Neighbourhood Centre, our gratitude to the Burdekin Shire Council for the generous donation of \$13,415.00 for 2014/2015.

As you would be aware, all contributions are greatly valued – they enable us to continue our services and support to the Burdekin community. Our Centre could not function at our current capability without the Council's support – so this donation is greatly welcomed and appreciated.

The Management Committee would also like to thank all the Councillors who have made themselves available for our various activities. It is always a pleasure to have our local Councillors attend and showing their support for local community organisations.

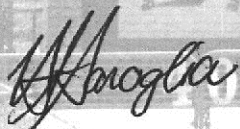
Matthew, it was lovely to meet you at our Biggest Morning Tea, we hope to see more of you in 2015.

We would also like to extend our heartfelt thanks to Cr. Lyndy McCathie for her continued presence as the Council Representative on our Management committee. She brings a great deal of expertise and support to the Management meetings, and has proven time and time again to be a very effective conduit between the Council and the Burdekin Neighbourhood Centre.

If, at anytime, the Burdekin Neighbourhood Centre can be of assistance to the Council, Please do not hesitate to contact us. Please find enclosed a receipt for the donation amount.

Again, many thanks.

Yours sincerely,



Natalie Saroglia  
Co-ordinator

VIEW		AGENDA	C12
		DATE	9.12.14
NOTED		APPLIC #	
TENDER		PROP #	
ACTION		LAND #	
DEADLINE			



*"Working with our Burdekin Community"*

40 Chippendale Street, AYR P.O. Box 1342, AYR Q 4807  
P: 07 47 83 4243 F: 07 47 83 5338 E: bncai@bigpond.net.au  
ABN: 62 769 398 508



# Burdekin Shire Council

ABN:66393843289

145 Young St  
PO Box 974  
Ayr QLD 4807

## REMITTANCE ADVICE

Telephone: (07) 4783 9800  
Fax: (07) 4783 9999

Burdekin Neighbourhood Centre Association Inc  
PO Box 1342  
AYR QLD 4807

**Payment No.:** 041847  
**Date:** 20 Nov 2014  
**Creditor Id:** 10230

**Page :** 1 of 1

<i>Date</i>	<i>Reference</i>	<i>Description</i>	<i>Amount</i>
19 Nov 2014	19112014	Annual Donation for 2014/2015 Financial Year	13,415.00
<b>Payment Amount:</b>			<b>\$13,415.00</b>

**The Total Amount has been transferred direct to your bank acc**

**Bank Name:** 633-108  
**Bank Account:** 140335555  
**Amount:** \$13,415.00  
**Payment No.:** 041847  
**Date:** 20 Nov 2014  
**Fax Number:** 07 4783 5338



# Premier of Queensland

BURDEKIN SHIRE COUNCIL
File ID No. <b>411</b>
<b>27 NOV 2014</b>
Document No. ....
Retention Period .....

For reply please quote: TQP/PC – TF/14/21721 – DOC/14/172388

**25 NOV 2014**

Councillor Bill Lewis  
Mayor  
Burdekin Shire Council  
PO Box 974  
AYR QLD 4807

Executive Building  
100 George Street Brisbane  
PO Box 15185 City East  
Queensland 4002 Australia  
**Telephone +61 7 3719 7000**  
**Facsimile +61 7 3221 1809**  
**Email** ThePremier@premiers.qld.gov.au  
**Website** www.thepremier.qld.gov.au

Dear Councillor Lewis

*Bill*

I am delighted to announce *The Queensland Plan Act 2014* (the Act) received assent on 27 October 2014 and *The Queensland Plan* was ratified on 29 October 2014.

Local government and communities played a key role in shaping *The Queensland Plan* and will be vital in implementing Queenslanders' vision for our great state. One of the things Queenslanders consistently stated during the development phase was they wanted a plan that went beyond politics and election cycles. This was an important consideration in legislating the plan.

As I have said on many occasions *The Queensland Plan* is not a State Government plan, it is a plan created by the people of Queensland for all Queenslanders. I am pleased to say this is reflected in the Act, which provides for the development and ratification of a plan that establishes a long-term vision for Queensland, reflecting the aspirations of the community, business and industry.

The Act has implications for the Queensland Government, as well as a broad range of stakeholders, including local government, business, industry and the broader community.

I appreciate the tough conditions facing all levels of government and, in crafting the legislation, we have sought to ensure obligations are not overly onerous for local government and can be fulfilled through existing mechanisms, including through your corporate plans and existing reporting frameworks.

Specifically, the Act requires local government to have regard for *The Queensland Plan* when preparing corporate plans and in setting the strategic direction for your local government area. The Act requires local governments to include a statement in their annual report about actions in relation to *The Queensland Plan*. Annual reports from local government will form part of the overall Queensland Plan annual report that will include progress reports from the Premier of the day, public authorities and the ambassadors' council.

VIEW	MAYOR	AGENDA	C12
MGRS	CEO	DATE	16.12.14
NOTED		APPLIC #	
TENDER		PROP #	
ACTION		LAND #	
DEADLINE			

I am very pleased to see local governments have already seen the tremendous opportunities *The Queensland Plan* presents for their area, and some have started to identify how to align their strategies with the direction of the plan, such as Whitsunday 2020.

If you would like further information please contact Ms Natasha Neale, Director Strategic Policy on telephone (07) 3003 9210 or by email at [natasha.neale@premiers.qld.gov.au](mailto:natasha.neale@premiers.qld.gov.au).

I look forward to working with you and our fellow Queenslanders to implement *The Queensland Plan* and to achieve Queenslanders' vision.

Yours sincerely



CAMPBELL NEWMAN

# Circular

## Proposed Arts & Culture Conference: Feedback Request

### For Comment

**Circular:** 2014-089  
**Release Date:** Friday, 28 November 2014  
**Authorised by:** Greg Hallam PSM Chief Executive Officer

We are seeking input on a proposal to deliver a three day Arts & Culture conference during September 2015 on the Sunshine Coast.

The conference would be developed for local governments and their partners including arts and cultural practitioners, organisations and other stakeholders involved in the development, delivery and/or advocacy for arts and culture across Queensland.

A [two minute survey](#) has been composed in order to gauge interest and gather feedback on the proposal, in partnership with Arts Queensland and Sunshine Coast Regional Council.

Please help by distributing the survey to others who may be interested, and by sparing a couple of minutes to give us your own response to seven simple questions. The survey closes Friday, 12 December 2014.

Further enquiries regarding the proposed event or additional feedback can be directed to [ask@lgaq.asn.au](mailto:ask@lgaq.asn.au) or 1300 542 700.

BURDEKIN SHIRE COUNCIL	
File ID No.	925
2 DEC 2014	
Document No.	
Retention Period	

Thursday, 20 November 2014

Tammy Quagliata & Eliza Lovell  
Burdekin Shire Council  
PO Box 974, Home Hill  
QLD 4807

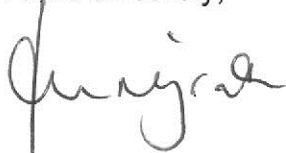
Dear Tammy & Eliza

On behalf of the Victoria Racing Club, I would like to thank you for your help and co-operation with the visit of the Emirates Melbourne Cup to Home Hill on 20th September.

The VRC whole heartedly appreciates the efforts of everyone concerned in putting the day together and applauds you on the professionalism displayed in the lead up to and during the activation of this visit.

Once again, thank you as the VRC wishes you every success and happiness for the upcoming festive season.

Yours sincerely,



**JOE McGRATH**  
Racing Engagements and Cup Tour Manager

PROUD SUPPORTERS



MELBOURNE



SPOTLESS

VIEW	ECDEN	AGENDA	C12
	COMDEN	DATE	16.12.14
NOTED		APPLIC #	
TENDER		PROP #	
ACTION		LAND #	
DEADLINE			

**ECONOMIC DEVELOPMENT STRATEGIC ADVISORY GROUP (EDSAG)**  
**Meeting held on Thursday, 11<sup>th</sup> September 2014**

Held in the Pacific Reef Fisheries  
Commencing at 7am  
(Appendix A – Action Table)

---

1. **ATTENDANCE**

Mr. Dan Horan (Chair)  
Mr. Matthew Magin  
Ms. Eliza Lovell  
Mr. John Maloney  
Cr. Lyndy McCathie  
Mr. Gordon Edwards  
Mr. Gary Spotswood  
Ms. Carmel Dal Ponte  
Mr. Shane Great

**Apologies for Absence:**

Mr. Talbot Cox  
Mr. Darren West  
Mr. Jim Collins

---

2. **PRESENTATION BY MR. SHANE GREAT, MANAGER OF PLANNING & DEVELOPMENT**

Shane provided an overview of the town planning scheme. A new plan will be developed over the next 18 months. The plan will provide industry and the community direction on the preferred settlement pattern for the shire over the next 20-25 years. It will also provide one vision for the future development and form the shire that is consistent with the Burdekin Shire Community Plan aspirations. It is crucial for the community to provide feedback into the new plan. Eliza will distribute a list of questions for feedback from EDSAG members. Members are also encouraged to network in the community to gain feedback into the plan.

---

3. **MANAGER OF ECONOMIC DEVELOPMENT**

Matthew advised that Mr. Adrian Scott has been appointed to the position and will commence on Tuesday, 7<sup>th</sup> October 2014.

---

4. **REVIEW OF ACTION TABLE**

Item 5	Eliza scheduled meeting through outlook.
Item 6.1	Eliza forwarded members link to community plan survey.
Item 6.4	Invitation sent to DSDIP to attend future meeting. <b>Action</b> - Eliza to advise DSDIP if Andrew Broadbent (Brisbane Office) may be able to also attend.
Item 6.5	Gordon is preparing the report.
Item 6.6	Quote received from AECgroup to undertake gap analysis and capability/capacity audit. Continue to investigate funding opportunities. <b>Action</b> – Eliza to forward quote to members for feedback.
Item 6.7	Meeting with SunRice/Blue Ribbon Rice – Transaction currently being reviewed by QCCC. Once completed, meeting will be arranged.



- Item 6.8        Draft objectives distributed to members.  
Item 6.9        Value of health industry – held over until next meeting.  
Item 6.15       Shane Great invited to meeting.
- 

5.        **EDSAG Objectives**

Draft objectives distributed to members. Discussion held on the need to include an objective on working with other shires to share information. Carmel to develop additional objective and forward to Eliza.

---

6.        **BURDEKIN ECONOMIC DEVELOPMENT STRATEGIC PLAN**

A copy of the *Priority Projects by Priority Direction* from the strategic plan has been distributed to members. The 'Project Progress' section is what has been completed to date.

---

7.        **OTHER PLANS/REPORTS**

Eliza tabled a number of plans and reports that have been prepared in the past that EDSAG actions will align with.

---

8.        **DEFENCE WHITE PAPER/DEFENCE HOUSING**

Council has recently made a submission to Department of Defence towards the Defence White Paper 2015. Copy of submission provided to members. Council has also written to the Commander 3<sup>rd</sup> Brigade to consider housing ADF personnel in the Burdekin Shire. Eliza to report back to group once a response has been received.

Gordon Edwards left the meeting at this stage.

---

9.        **NQ2031- NORTH QUEENSLAND REGIONAL ECONOMIC DEVELOPMENT PLAN**

NQ2031 developed by North Queensland Regional Organisation of Councils (NQROC). The Plan identifies priorities to develop the region and grow the economy. 5 key regional themes included in the plan - Growing Agriculture, Unlocking Resources Wealth, Energy Resilience, Commercial Hub for Northern Australia and the Asia Pacific, Building a Knowledge and Services Economy. Burdekin has been appointed as 'project champion' for Growing Agriculture – Cr. Bill Lewis appointed as Chairman. Updates on working group meetings will be distributed to members as they are received.

---

10.       **STRONG CHOICES INVESTMENT PROGRAM**

Townsville Enterprise met with Council representatives as well as Dan Horan to discuss the Strong Choices Investment Program. The Queensland Government's proposal that assets listed for sale, long term lease or private sector participation would provide \$33.6 billion to the State (based on a conservative book value) and plans to use 75% of these proceeds or \$25 billion for debt reduction and 25% or \$8.6 billion to create the Strong Choices Investment Program. Townsville Enterprise is preparing a regional priority list. Discussion held on the Burdekin's priorities to include Rural water supply delivery infrastructure, Upgrade Bruce Highway – Second crossing of Burdekin River, Fast Rail Transport. Final submission to be emailed to members. It was noted that members should continually promote the top 3 priorities for the Burdekin.

11. **GENERAL BUSINESS**

**Item 1 – Domestic Ethanol Use**

Dan Horan advised that he recently met with a client who is able to convert diesel machinery and trucks to run on Ethanol and Diesel by using an Ethanol injection system, rather than trying to blend the two fuels. The client's query to Dan was whether there is an opportunity to create our own market for locally produced ethanol, if there were savings in it for farmers and contractors and it was viable to operate. Dan to discuss this matter further with Talbot Cox.

**Item 2 – Qld Competition Authority – Draft Aquaculture Regulation in Queensland Report**

John Moloney advised that part of the report will identify a 450ha development area in Queensland. Council will forward a submission to the QCA and cc DSDIP and the Minister recommending the Burdekin as a suitable location for the trial.

There being no further business the meeting closed at 9am.

Mr. Dan Horan  
CHAIRMAN

## APPENDIX A – ACTION TABLE

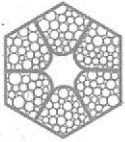
### Action Table – Meeting No. 2 – 11-09-2014

Agenda Reference	Action Item	Responsible Officer	Due Date
2.0	Eliza to forward Shane's presentation and survey to all members.	Eliza	30/09/2014
4- 6.4	Contact DSDIP request if Andrew Broadbent (Brisbane office) may be able to attend next meeting.	Eliza	30/09/2014
4- 6.6	Eliza to email AECgroup quote to undertake gap analysis and capability/capacity audit to all members.	Eliza	30/09/2014
5.0	Carmel to prepare additional objective and Eliza to forward to members.	Carmel/Eliza	30/09/2014
8.0	Eliza to report back to group once a response has been received from Commander 3 <sup>rd</sup> Brigade.	Eliza	
9.0	Eliza to forward updates on NQ2031 working groups as they are received.	Eliza	Ongoing
10.0	Eliza to email final Strong Choices Investment Program priority list to members.	Eliza	Once submitted
11.1	Dan to discuss local ethanol market with Talbot.	Dan/Talbot	
11.2	Eliza to forward submission to QCA cc- DSDIP/Minister re- Draft Aquaculture Regulation in Queensland Report.	Eliza/Matthew/John	

### Action Table – Meeting No. 1 -31-07-2014

Agenda Reference	Action Item	Responsible Officer	Due Date
5	Schedule future meetings.	Eliza	Completed
6.1	Forward members a link to community plan survey.	Eliza	Completed
6.4	Contact DSDIP advising of EDSAG and invite to future meeting.	Matthew/Eliza	Completed
6.5	Prepare report on positives/negatives on establishing a processing plant in the Burdekin.	Gordon	
6.6	Investigate grant opportunities to undertake gap analysis and capability/capacity audit.	Eliza	Ongoing
6.7	Arrange meeting with SunRice CEO and Steve Rogers, Blue Ribbon Rice.	Eliza	23/10/2014
6.8	Draft objectives to be prepared and distributed prior to next meeting.	Matthew Danny Eliza	Completed
6.9	Value of health industry to the Burdekin.	Jim Eliza	23/10/2014
6.15	Invite Shane Great, Manager of Planning to present at future meeting to provide information on the Town Planning	Eliza	Completed

	Scheme.		
--	---------	--	--



## MUSEUM OF TROPICAL QUEENSLAND

70 - 102 Flinders Street, Townsville  
Queensland 4810, Australia  
t. +61 7 4726 0600 | f. +61 7 4721 2093  
info.mtq@qm.qld.gov.au  
mtq.qm.qld.gov.au

BURDEKIN SHIRE COUNCIL	
File ID No.	446
3 DEC 2014	
Document No.	
Retention Period	

1 December 2014

Mr Dan Mulcahy  
Director of Corporate and Community Services  
Burdekin Shire Council  
PO Box 974  
AYR QLD 4807

Dear Dan,

### RE: Museum of Tropical Queensland Council Community Pass

Please find enclosed a report for the 2013 - 2014 financial year outlining the achievements of the Museum of Tropical Queensland Community Pass. You will note the impact of the charged entry compared to previous years.

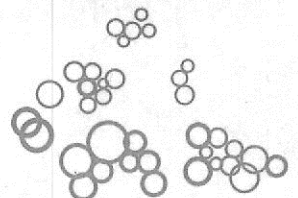
I look forward to our continued partnership.  
Please find enclosed an invoice for the current year.

Yours faithfully,

Peter McLeod  
Director

VIEW	COMDEV	AGENDA	C12
		DATE	16.12.14
NOTED		APPLIC #	
TENDER		PROP #	
ACTION		LAND #	
DEADLINE			

ORIGINAL TAX INVOICE → EXP. ✓





# TAX INVOICE

# COPY

Burdekin Shire Council  
P.O.Box 974  
AYR QLD 4807

**Invoice No:** 0014813  
**Date:** 28/11/2014  
**Debtor Id:** QM01964  
**Due Date:** 28/12/2014  
**Page:** 1 of 1

Description	Exclusive GST	* GST	Amount
Agreement between Burdekin Shire Council and Museum of Tropical Queensland for Community Pass Program August 2014 - June 2015	5,399.00	539.90	5,938.90

**Total Amount Due :** \$5,399.00 \$539.90 \$5,938.90

\* GST is a Commonwealth Government Tax

Please detach and return with payment:

**Customer No:** QM01964  
**Customer Name:** Burdekin Shire Council

**Invoice No:** 0014813

**Date:** 28/11/2014

You can pay by:

**Exclusive GST:** \$5,399.00

(i) Cheque made payable to :

**GST:** \$539.90

Queensland Museum

**Amount:** \$5,938.90

(ii) EFT to CBA Account 064-007 00050025

**Due Date for Payment:** 28/12/2014

with remittance advice emailed to qmfinance@qm.qld.gov.au

If you have any further queries regarding this payment please contact :

**The Queensland Museum** on (07) 3840 7655



THANKS A MILLION

Your business and support helps us care for more than a million irreplaceable treasures in the State Collection - connecting Queenslanders and their stories

## Report to Burdekin Shire Council

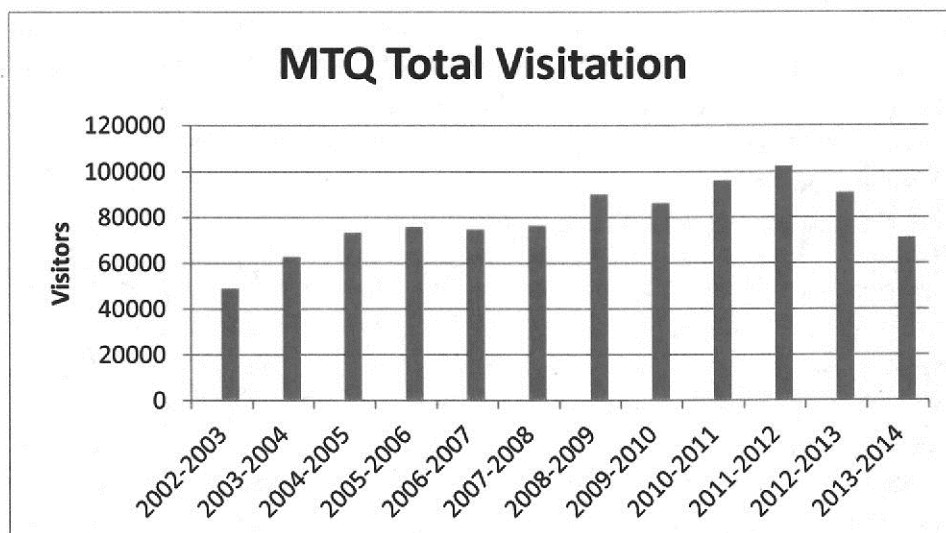
### MTQ Community Pass 2013/14

In 2013/14 MTQ delivered a strong program of exhibitions and public programs, this is detailed in Appendix 1 and includes temporary exhibitions, travelling exhibitions, school holiday programs, information sessions (ie discover more talks) community displays and also several community outreach activities.

#### Overall Visitation

Overall visitation for the 2013/14 financial year showed a decrease in visitation in comparison to previous year and also from an all-time record high achieved in 2011/12. A total of 71,113 visitors accessed the museum which represents a decrease of 23% on previous year. The primary reason for this reduction was the introduction of charged entry fees for Townsville and Burdekin residents which commenced in May and September 2013 respectively. Whilst these sectors did change in a negative way, the Non local visitation grew substantially (49%) to 28,000, the highest number on non-locals since 2003.

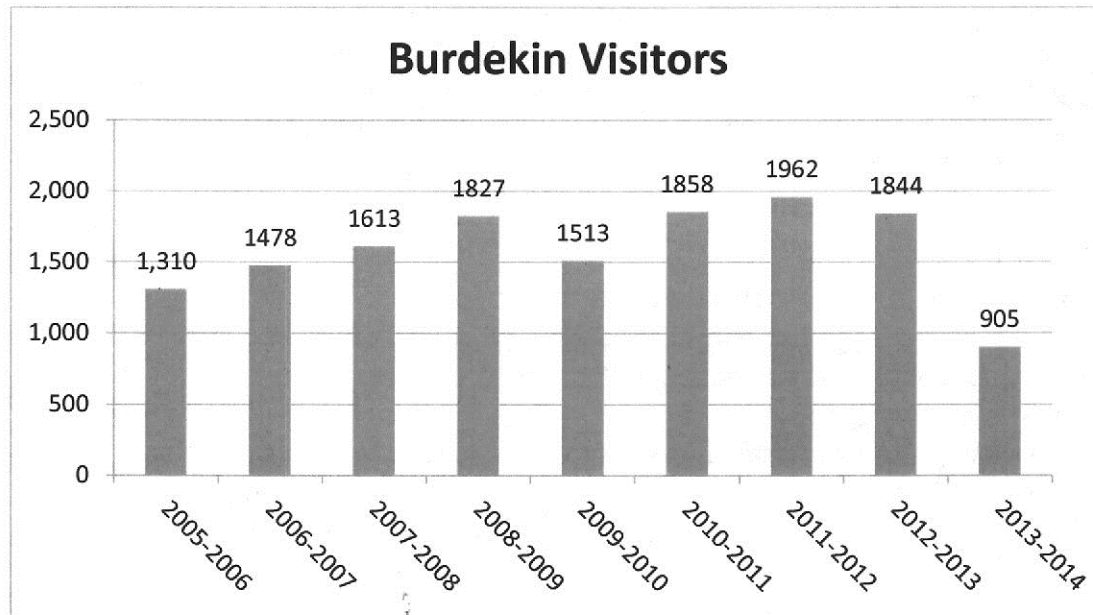
Fig 1 MTQ Total Visitation



#### Burdekin Residents

Visitation from Burdekin residents for the financial year showed the same pattern as per the overall visitation. In 2013/14, 905 Burdekin residents attended the museum which represents a decrease of 51% from previous year, this change in visitation was very similar to what also occurred from Townsville residents. The impact of charged entry was immediate with visitation for the first two months of September and October 2013 dropping by 50% for each month..

Fig 2 MTQ Burdekin Visitation



The introduction of charged entry has caused a significant impact on visitation at MTQ. This same impact has been demonstrated through the introduction of charged entry at other state and national museums. In a paper presented to the Australian Senate in 1992, the Australian Museum, Powerhouse Museum and Museum Victoria reported a 50-80% reduction in museum visits following the introduction of admission fee. This is consistent with the figures from the Senate Inquiry which reported decreases ranging from 39-75%.

A similar response occurred in the United Kingdom during the 1980's when national museums faced political pressure to introduce a charged entry to make them less dependent on the government funding. Half of the national museums introduced a fee. Those that didn't including the TATE, National Gallery and the British Museum, saw their visitor numbers grow spectacularly. An example of the impact of an admission fee can be evidenced by the marked decline in the number of visitors to London's Victoria and Albert Museum which saw its visitor numbers halved with the introduction of a 5 pound entry fee. When the entry fee was removed in 2001 the Victoria and Albert saw their numbers increase by 115% in the first year.

A negative impact on visitation was always expected from the introduction of charged entry for local residents. MTQ has put in a considerable effort to counter this impact through the delivery of a more intensive program and also a greater marketing presence. We envisage that it will take a few years to convince the community that the Museum remains an exceptionally good value for money resource for the community.

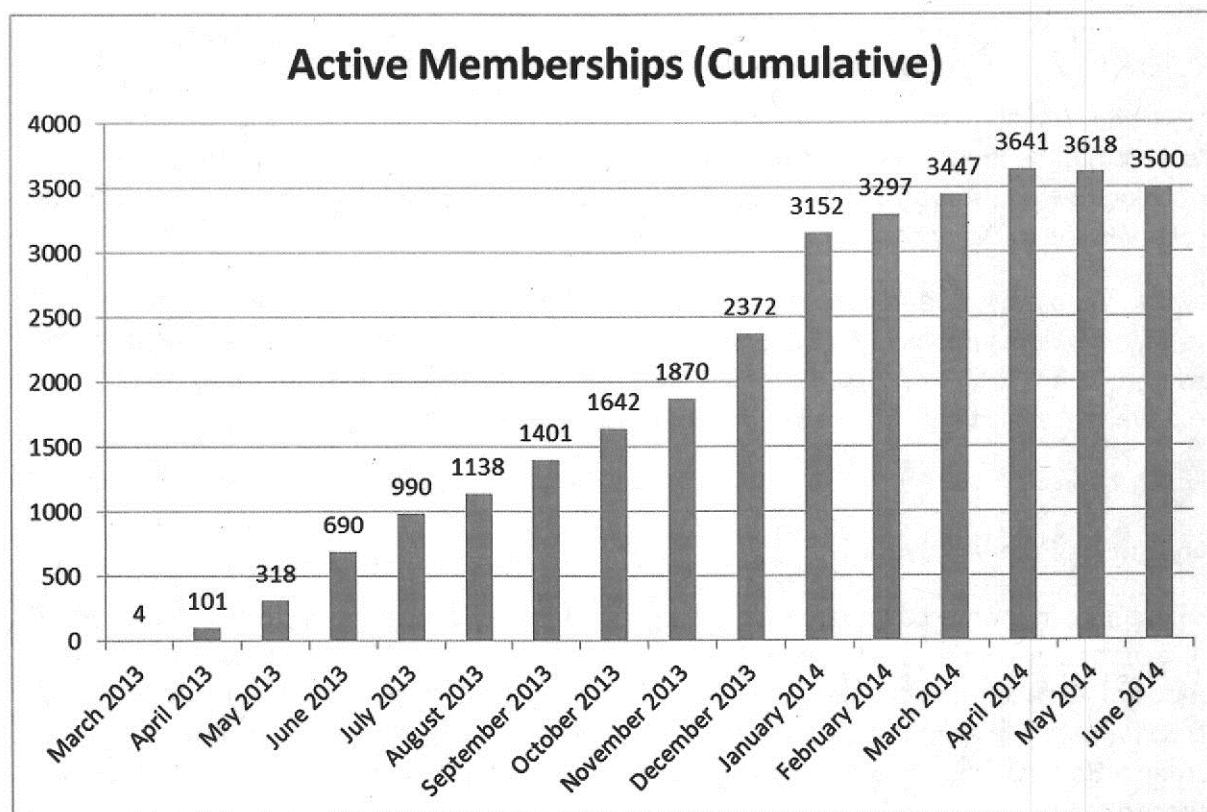


## Memberships

In May 2013 MTQ commenced a new membership program known as MyMuseum. The membership program enables visitors with unlimited access to the museum along with additional benefits of exclusive member events and discounts. The cost of an annual membership is twice the value of a single admission charge. As part of the BSC funding arrangements Burdekin residents receive half price membership to the Museum.

As can be seen from Fig 3 the growth of memberships of the first year of the program has been quite extensive, and by June 2014 3,500 memberships had been purchased, this equates to over 10,000 people involved in the membership program (assumes 4 persons in every family membership).

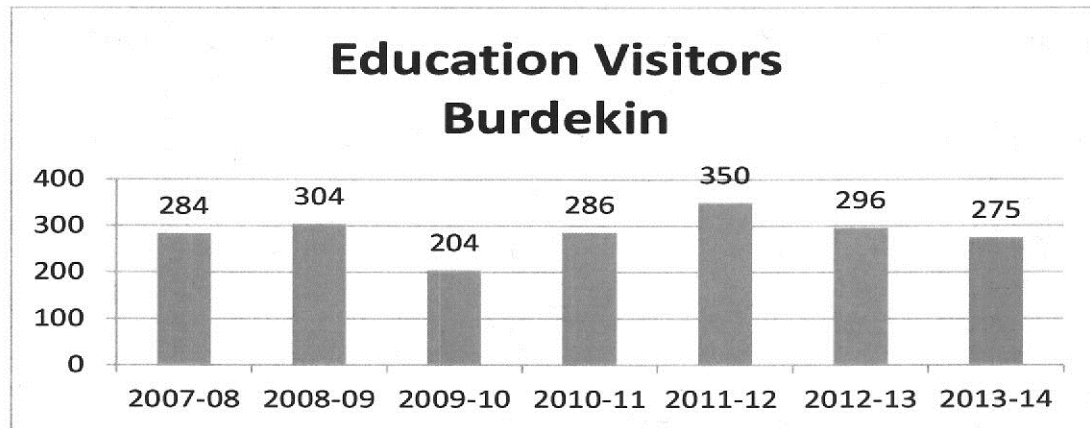
Fig 3



The growth of the memberships represents a solid achievement during the first 12 months. The data collected from this program provides strong insight as to the extent of repeat visitation and also provides an avenue for direct marketing and feedback from local residents. Feedback from participants in the program shows that they are satisfied with the offerings it provides.

## Education

School Education visits for the year achieved a similar level as previous year. Admission for schools undertaking education programs did not change under the new arrangements.



Loans Kits continued to be in high demand this year. In order to increase the availability and circulation of the museum's permanent and touring loan kits, a special focus has been made of making these kits available through school library's, where the kits are in turn available to all classes within the school..

New museum exhibits and educational programs align well with areas in the new curriculum, and will provide useful tools for educational professionals into the future. The opening of the new permanent exhibition *Colour: Secret Language of the Reef* in May and also several of the travelling exhibitions (such as *Humanoid Discovery*) are examples of this.

## Community Pass Analysis

The nature community pass partnership program changed considerably this year as a result of the introduction of an admission fee. The school holidays continue to represent the peak periods of visitation to the Museum and also receive considerable marketing exposure within the community. In all Marketing collateral associated with the school holiday programs the Burdekin Shire Council was acknowledged and recognised for their support (examples attached).

The impact of charged entry has been significant, this has occurred despite an increase in marketing collateral and activity in comparison to the previous year. Given the evidence from other Australian and international Museums it will be quite some time before the Museum can achieve levels of visitation achieved prior to charged entry.

## Appendix 1

Title	Duration	Description
<b>EXHIBITIONS</b>		
<b>Recollections</b>	23 July 2013 – 6 Oct 2013	MTQ opened, on July 23rd, a new internally developed temporary exhibition entitled "Recollections". The exhibition was developed in partnership with community and showcases 26 private collections and the associated stories of individuals from the local community. Collections representing a range of objects were on show including Dr Who, Star Wars, KISS and Tin Tin memorabilia, fishing lures, cameras, microscopes and many other items. A formal exhibition opening event on the 22nd was well attended by contributors and community.
<b>NAIDOC</b>	9 July 2013 – 17 July 2013	MTQ opened, on July 9th, a display with a Queensland focus supporting this year's official NAIDOC theme, celebrating the 50th anniversary of the Yirrkala Bark petitions that were presented to Federal Parliament House of Representatives in 1963. The bark petitions were a catalyst towards changes in the Constitution and the 1967 Referendum had a significant impact on shaping the future for Queensland's Indigenous people.
<b>I've Been Working on the Railway</b>	14 August 2013 -	MTQ opened with a formal launch event, on August 14th, the new touring exhibition "I've Been Working on the Railway". This exhibition has been produced by The Workshops Rail Museum, and tells the story of Aboriginal, Torres Strait and Pacific Islander people who travelled to work on the development of the railways through Queensland. The exhibition has attracted strong interest from local communities, and will be on show until October 13th.
<b>Rail in North Queensland – a Photographic history</b>	14 August -	MTQ opened, on August 14th, a small photographic display highlighting the early rail lines which were developed, often in very adverse conditions, through North Queensland. Often these lines were rapidly built to service mining districts, and fell into disrepair when booms became bust. The display was produced to provide local stories in support of MTQ's latest temporary exhibition, "I've Been Working on the Railway".
<b>Victory Parade Model Display</b>	12 August -	MTQ opened on display, on August 12th, a 1:4 scale rail model created for the 1946 Townsville WWII Victory Parade Model. Scratch built by South Yard Railway Workshop apprentices in Townsville, the model depicts a Class C17 steam locomotive, coal wagon, goods wagon, passenger wagon and a trestle bridge. Queensland Rail has expressed an interest in donating the model to Queensland Museum, at the end of the display period.

<b>Cassowary Display</b>	August 2013 -	MTQ Taxidermy Volunteers and Displays staff completed and installed a new permanent Cassowary Display this month. The display features one taxidermied cassowary adult, one juvenile and one chick, and accompanies the Museum's permanent Enchanted Rainforest exhibition.
<b>Come Hell or High Water</b>	29 October – 27 April 2013	MTQ opened its latest internally developed exhibition, "Come Hell or High Water", on the 29th of the month. The exhibition has been produced in partnership, and with the support of sponsors including Townsville City Council, Emergency Management Queensland, the Townsville Local Disaster Management Group and the Townsville Bulletin. The exhibition highlights the science, history and impacts of cyclones, as well as the practicalities of living in a region often threatened by cyclones.
<b>Hunters and Collectors</b>	5 November – 16 March 2014	MTQ Senior Curator Trish Barnard installed 60 objects in the exhibition titled 'Hunters and Collectors' which presents indigenised objects from the museums Glenn Cooke collection of domestic home wares and souvenir tourist objects as a requirement of her Masters thesis completed recently. Trish is also preparing 3 small displays to highlight Research Features from the Cultural Environments program at MTQ on the collectors Gladys Henry, Frank Woolston and Joseph Campbell. Barnard recently acquired an impressive Wik ceremonial sculpture from Aurukun that will also be displayed
<b>Explore-a-saurus</b>	1 November 2013 – 9 February 2014	<p>MTQ opened its latest temporary exhibition "Explore-a-saurus" on Friday 1st November. On hire from Scitech, and spread across MTQ's 700m<sup>2</sup> Great Gallery and the 250m<sup>2</sup> Temporary Exhibitions Gallery, "Explore-a-saurus" is the largest exhibition that the museum has hosted. The exhibition features numerous animatronic dinosaurs, touch-screen and other hands-on interactives, and a real-time reproduction of the Winton Dinosaur Stampede. The exhibition will be complimented by MTQ's upcoming dinosaur-themed school holiday program, and a wide range of themed retail stock lines, and is expected to draw very strong visitation over the upcoming months.</p> <p>MTQ's largest feature exhibition for the year, Explore@sauros, finished this month on the 9th of February and was disassembled and shipped out during the following week. During the 14 weeks that it was open, the exhibition attracted 28,679 visitors to the museum, and a total of 2,032 MyMuseum memberships were sold to approximately 4,957 new members.</p>
<b>Langley</b>	November 2013 -	MTQ re-opened this month the permanent "Langley" exhibition. The revised display consists of seven dive helmets from the museum's extensive Langley collection, including several which have not been on display before, as well as a number of diving accessories including sea-scope, boots and dive knife. Revision of this display will also allow for the travelling of



		eight helmets from the collection to Queensland Museum and Sciencentre next year for exhibition.
<b>Colour Exhibition</b>	February 2014 -	MTQ's new permanent exhibition Colour: secret language of the reef, was installed in the Level 2 Gallery this month. Sponsored by BHP Billiton Cannington, the exhibition highlights how an understanding of colour, light and vision is critical for an appreciation and understanding of the ecology of the reef. The exhibition highlights recent MTQ research in the deeper mesophotic zone of the reef, and the results of research partnerships including the Catlin Seaview project. A highlight of the exhibition is a simulated submarine descent to down the reef to 120 metres. The exhibition will open with a formal event next month.
<b>Frockstars Exhibition</b>	22 February – 25 May 2014	MTQ opened its latest major temporary exhibition, Frockstars: inside Australian Fashion Week, on the 22nd of February. Developed by the Powerhouse Museum in collaboration with IMG Fashion, the exhibition takes visitors behind the scenes of Australia's most prestigious fashion event, Australian Fashion Week. Sue Valis, Conservator/Collection Manager assisted the Powerhouse museum staff with the installation. The 250m2 exhibition will be on show at MTQ until Sunday 25th of May, and is expected to draw new audience demographics into the museum.
<b>Undersea</b>	20 February – 30 April 2014	MTQ opened a new temporary photographic exhibition entitled Undersea, on the 20th of February. The display showcases images from QM photographer Gary Cranitch, that were taken as part of the CReefs Australia project, which has been studying coral reef biodiversity over the last three years. The display also aligns with MTQ's newest permanent exhibition, Colour: secret language of the reef.
<b>Gladys Henry Display</b>	8 March – 3 April 2014	MTQ opened, on Saturday 8th March, a small display of Indigenous objects curated by Trish Barnard from the collection of Ethnographic Collector Gladys Henry to celebrate International Women's Day. The display will run until 3rd April, and is the first of a series of special interest displays showcases items from MTQ's fascinating cultures and history collection.
<b>Dressed by the Best</b>	15 March – 30 April 2014	MTQ opened, on Saturday 15th March, a display of dresses and other fashions produced by local Townsville Designers curated by Trish Barnard. Planned to support the Museum's current touring exhibition, Frockstars, Inside Australian Fashion Week, the display will run until 25th May.
<b>Knotting the Grass</b>	21 March – 17 May 2014	MTQ opened, on 21st March, Knotting the Grass, a new community display produced by MTQ Visitor Services Officer Dr Kamelia Carr, who was born in Tehran. The exhibition consists of paintings and handicrafts that represent aspects of Iranian culture that remain important to Dr Carr – music, dance, ethnicity and the celebration of the Iranian New Year. Sue

		Valis condition reported and assisted with the installation of the 65 objects. The exhibition is on show until 17th May.
<b>Andrew Ball display</b>	12 April 2014 -	MTQ opened, on Friday 12th April, a new permanent display, which tells the story of Andrew Sayers Ball, who together with Mark Reid established the site that would become the port of Townsville in 1864. The feature of the display is Andrew Ball's 1860 Tranter Revolver, which has been provided to the Museum by the current members of the Ball family. The display was opened to coincide with the 150th anniversary of the arrival of the Ball and Reid expedition at the mouth of the Ross River, and is the first of a series of display planned to commemorate the 150th anniversary of the 1866 establishment of the city of Townsville.
<b>Made from Scratch</b>	21 May - 17 August 2014	MTQ opened, on the 21st of May, a new temporary exhibition entitled "Made from Scratch". Produced in partnership with the local community, the exhibition showcases the work of 25 contributors who each make unique and creative items from basic materials. Co-ordinated by MTQ Public Programs Officer Viv Moran, the exhibition was launched with an evening opening event attended by contributors, MyMuseum Members, and other community members. MTQ's Conservator/Collection Manager Sue Valis inspected and condition reported 215 objects for the exhibition. The exhibition will run until the 17th of August.
<b>Pearling</b>	24 June – 6 July 2014	MTQ Senior Curator Trish Barnard developed a small display on Pearling, which was opened in the Great Gallery on the 24th of June. The display describes the early pearling industry in the Torres Strait and features a Heike Helmet and carved pearl shell buttons. MTQ Conservator/Collection Manager prepared the objects for display.
<b>Queensland Day Display</b>	24 June – 6 July 2014	MTQ Senior Curator Trish Barnard developed a small display for Queensland Day, which was opened in the Great Gallery on the 24th of June. The display included objects and a bust of one of Queensland's favourite sons, indigenous footballer Matt Bowen.
<b>Frank Wolston Display</b>	25 June – 1 August 2014	MTQ Senior Curator Trish Barnard developed a display of items from the Museum's Frank Woolston collection with was opened in the Great Gallery on the 25th of June. An avid collector during the mid-1900s, Frank Woolston had a keen interest in cultures of North Queensland and worked closely with the Jirrbal, Girramay and Gulnay peoples from around Tully and Cardwell. He collected a significant collection of stone tools, and a number of these are on display.

PUBLIC PROGRAMS AND EVENTS		
<b>Camo Kids</b>	22 June 2013 – 7 July 2013	MTQ June/July school holiday "Camo Kids" concluded this month. Developed in partnership with Lavarack Barracks, the program provides a hands-on opportunity to explore the daily lives of Townsville's defence force personnel and the equipment they rely upon in the field. Highlights included displays of military vehicles and artillery, presentations by the various units at Lavarack, and displays by the 3RAR and 2RAR museums. Also on show daily was an extensive display by the North Queensland Historic Re-enactment Society.
<b>Discover More Talk</b>	9 July 2013	MTQ's Discover More Talk for July was presented by Jezzine Barracks Museum Curator Amanda Pontifex. Amanda discussed the events surrounding the little-known bombing of Townsville, and also described her recent study tour of Asia. The talk was well attended by visitors including local military veterans and historians, providing for a lively and informative post-lecture discussion.
<b>Great Barrier Reef Discovery Guide event</b>	25 July 2013	MTQ hosted an event on Thursday July 25th to celebrate the completion and launch of Queensland Museum's latest publication, the Great Barrier Reef Discovery Guide. Attending were a number of external and internal authors and contributors, as well as other MTQ staff and invited members of the public.
<b>Café Scientific</b>	July 2013	MTQ hosted, as a Café Scientific event, the regional launch the "Redmap" online species distribution database. Speaking on the night were representatives of James Cook University, the local recreational fishing community, and the local dive tourism industry. Redmap is an on-line resource that compiles data of marine species sightings provided by the community, and validated by research scientists. The launch was attended by 50 visitors.
<b>JCU Volunteer Expo</b>	13 August 2013	MTQ staff and volunteers represented MTQ at this year's "JCU Volunteer Expo" on the 13th of August. The expo was conducted as part of "National Networking Week", and provided the opportunity for students and community to meet with representatives from volunteering organisations across the region.
<b>Disability Expo</b>	20 August 2013	MTQ staff and volunteers represented MTQ at this year's "School to Post-School Transition Disability Expo" on the 20th of August. The focus of the EXPO is the transition from school to post school options of students with disabilities and special needs.
<b>Hands on Science stall</b>	14 August – 18 August 2013	MTQ staff and volunteers represented MTQ at a 'Hands on Science' stall at this year's Townsville "Cultural Fest" from the

		14th to the 18th of August, as part of National Science Week. The stall was a sustained collaborative effort from Townsville's science education community including MTQ, CSIRO Education, and JCU's Faculty of Science of Engineering, and Faculty of Medicine, Health and Molecular Sciences.
<b>Scinema</b>	August 2013	MTQ hosted, as part of Science Week, the Scinema International Festival of Science Film 2013. A variety of short and special interest films were shown free-of-charge, including the award-winning 'Wonders of Life: Size Matters' which featured QM's invertebrate science and collections.
<b>Seniors Expo</b>	21 August 2013	MTQ staff and volunteers represented MTQ at this year's "Seniors Expo" in Townsville on the 21 <sup>st</sup> of August. The expo attracts up to 90 exhibitors, and is part of the Senior's Week events have been designed to provide public thanks to those quiet achieving seniors who give so much to Townsville. The event has a special significance to MTQ, as many seniors support MTQ directly as part of our volunteers program.
<b>Discover More Talk</b>	13 August 2013	MTQ's Discover More Talk for August was presented by MTQ's Dr Paul Muir of the Museum's Biodiversity section. Dr Muir, along with researchers from the University of Queensland, has using Remote Operated Vehicles (ROVs) to explore the deeper reefs of the Great Barrier Reef which are virtually unknown to science. Dr Muir presented ROV footage from his latest work and discussed the new questions posed by the discovery of significant coral reefs within the deep mesophotic zone. The talk was well supported, with some 40 attendees from AIMS, GBRMPA, JCU and the general public.
<b>Making Tracks Holiday Program</b>	21 September -	MTQ's Spring Holiday program "Making Tracks" commenced on the 21st of the month. Developed to support the museum's current "I've Been Working on the Railways" temporary exhibition, the holiday program features a range of railway-themed activities, crafts, workshops, trails, talks and presentations. The program has been developed and presented with the support and partnership of a number of individuals and groups the Railway Heritage Restoration Group, the Australian Railway Historical Society (Townsville Branch), the Townsville and District Society of Model Engineers and Queensland Rail.
<b>Members Event</b>	25 September 2013	MTQ conducted an exclusive Members Family Event on the 25th of the month. Thirty-six parents and children attended the event which included a sausage-sizzle, railway journey themed activities and a special timed track laying and toy engine driving competition.



<b>Discover More Talk</b>	10 September 2013	MTQ's Discover More Talk for August was presented on the 10th of the month by MTQ's Project Officer Robert de Jong. As a former manager of South Africa's Tswaing Meteorite Crater, Robert spoke about the challenge of maintaining and preserving a unique natural heritage site that is also a major tourist attraction.
<b>Magnetic Island Bay Days</b>	September 2013	MTQ Natural Environments was involved in the Magnetic Island "Bay Days" Festival during the month. This month-long festival celebrates the environment, arts, sciences and lifestyle that characterise the island. Drs Robyn Cumming and Carden Wallace participated in the "Life on our Beaches" stall at the Equinox Fair during Bay Days, presenting information on subjects ranging from pumice and goose barnacles to algae, sponges and corals. Carden Wallace also delivered a public lecture on "The Discovery of Coral Mass Spawning On Magnetic Island" as part of the scientific programme of the festival.
<b>Apec Children's Day</b>	8 September 2013	MTQ staff and volunteers represented the Museum at the Apex Children's Day held at the Townsville Model Train Park on Sunday 8th of September. The day provided opportunity to promote to Museum's upcoming rail-themed holiday program, "Making Tracks".
<b>North Queensland Preservation Society</b>	28 – 29 September 2013	MTQ hosted the North Queensland Machinery Preservation Society on the weekend of the 28th and 29th, as they displayed a number of fully restored and operating historic Bradford and Sundial engines. The display accompanied the Museum's current rail-themed holiday program "Making Tracks".
<b>Railway Talks</b>	September 2013	MTQ hosted this month a number of talks from local rail historical and enthusiasts. The talks included "The Magic of Stem Trains" by Brian Lane, "A Matter of Gauge" by Patrick Hodgson, and "The Rail Trail Movement" by Robert de Jong. The talks accompanied MTQ's current rail-themed holiday program.
<b>Discover More Talk</b>	14 October 2013	MTQ's Discover More Talk for October was delivered by the Adjunct Professor of James Cook University's School of Marine and Tropical Biology, Dr Glen Chilton. The author of several best-selling books, including The Last Place You'd Look for a Wallaby and The Curse of the Labrador Duck. Dr Chilton discussed the unexpected survival stories of species thought to be extinct and lost forever but then rediscovered, focusing on the implications and the conservation of these species.
<b>Japan Day</b>	27 October 2013	MTQ hosted Townsville's Japanese Community as they celebrated their annual Japan Day on the 27th of the month. Japanese Consulate General Mr Yoshiyuki Isoda welcomed those gathered and launched the day of exciting activities, demonstrations and food tasting. Highlights included rice pounding using traditional style rice grown in the Burdekin, sushi

		making for beginners, sword fighting, martial arts, and traditional koto playing. Well known artist Wataru used the day to complete a large painting under the gaze of the interested public, and School students studying Japanese demonstrated their skill with the Japanese fan dance. Over 500 visitors attended the day's events.
<b>Defence Force Welcome</b>	21 October 2013	MTQ hosted, on the 21st of the month, the Defence Forces Lateral Transfer Families Welcome to Townsville ceremony. Forty Adults and 19 children from the United Kingdom attended the afternoon tea. Official visitors included Brigadier McCaughey, Councillor Les Walker, Gracelyn Smallwood (Bindal Elder) who welcomed the families to country, Townsville and North Queensland, highlighted some of the major attractions of the city and our lifestyle. Museum staff Janelle Byrne (Learning Activities and Public Programs) and Trish Barnard (Senior Curator Indigenous Studies) also welcomed the visitors to the museum encouraging them to take advantage of a museum membership and provided a hands-on display of native fauna, books and loans kits. Tours of the Discover North Queensland Galleries allowed visitors to ask questions and experience the diversity of the regions environments first hand
<b>Natural Disasters</b>	28 October – 1 November 2013	MTQ hosted a week long program of natural disasters education programs, beginning on the 28th of the month. Delivered by CSIRO education, and linked to the museum's current "Come Hell or High Water" exhibition, the programs were made available to local school groups. Those attending included Marion Catholic School, Charters Towers School of Distance Education, Riverside Adventist School, Burdekin Christian College, St Joseph's Primary School, Kalmia State School and Jarvisfield State School.
<b>Townsville Fashion Festival Event</b>	October 2013	MTQ Collection items featured in the Mercedes Benz Townsville Fashion Festival event held at the museum, with models carrying a Snake, Black Cockatoo, Striped Possum and firesticks. The accompanying designs drew heavily on the themes of natural elements - Earth, Wind, Water, and Fire as part of this inaugural event highlighting local designers, hairstylists and makeup artists. Designs included spectacular head-dresses representing coral and rainforest foliage.
<b>Discover More Talk</b>	12 November 2013	MTQ's Discover More Talk for November was delivered by Doug Fraser, Senior Meteorologist at the Bureau of Meteorology. Doug discussed tropical weather systems, including different cyclone categories, the potential impact of a tropical cyclone, and cyclone tracking in this latest presentation planned to accompany MTQ's current "Come Hell or High Water" temporary exhibition.
<b>Members Event</b>	27 November 2013	MTQ Public Programs and Marketing Staff delivered a Members-Only event on the evening of Wednesday 27th November. The event had a Natural Disasters theme, and supported the museum's current "Come Hell or High Water" exhibition. Highlights included a series of experiment stations featuring CSIRO's Megan Spandler's Natural Disasters

		program, and 4 experiments developed by MTQ Education Officer Claire Speedie.
<b>Cyclone Sunday</b>	10 November 2013	MTQ operated a stall at this year's Cyclone Sunday event, held at Strand Park on November 10th. The event is conducted each year to raise awareness of the need for appropriate Cyclone preparedness, and is popular with new arrivals to Townsville. MTQ's staff promoted our current cyclone-themed "Come Hell or High Water" exhibition, as well as upcoming exhibitions and also the benefits of the Museum's new MyMuseum Membership program.
<b>Cyclone Talks</b>	November 2013	MTQ conducted a series of cyclone-themed talks throughout the month of November. The series began with exhibition curator Robert de Jong giving an overview of the major new "Come Hell or High Water" exhibition and its development on Sunday 3rd November. On 10th November the Bureau of Meteorology's Queensland Weather Services Manager Richard Wardle talked about the impact and severity of cyclones and tornadoes. Dr Erin Bohensky from CSIRO talked about public perceptions of disasters and the way they are portrayed in the media on 17th November. Finally, on 24th November, award-winning local author Bernadette Lawson and a group of Severe Tropical Cyclone Yasi survivors shared their stories of bravery, resilience and mateship in an inspiring conclusion to the series.
<b>Discover More Talk</b>	9 December 2013	MTQ's Discover More Talk for December was delivered on the 9th of the month by distinguished local historian Dr Dorothy Gibson-Wilde OAM. In this free talk Dr Gibson-Wilde discussed some of the true facts behind some legends of early Townsville. Dr Gibson-Wilde has been recognised by Townsville City Council as the Honorary City Historian since 1993, and her book Gateway to a Golden Land – Townsville to 1884, published in 1985, was the first thoroughly researched and footnoted history of early Townsville.
<b>Dino-rassic Park Holiday Program</b>	14 December 2013 – 27 January 2014	<p>MTQ's popular summer school holiday program commenced on the 14th of December. Entitled "Dino-rassic Park", the program complemented the museum's current "Explore-a-saurus" exhibition of animatronic dinosaurs by turning the museum into a "Dinosaur Park". Complete with presentations by Dinosaur Keepers, displays by MTQ's resident dinosaur "Dinomite" and a popular fossil dig-pit, the program immersed visitors into a world of living dinosaurs. The holiday program and accompanying exhibition drew very good visitation for the month of December. The "Dino-rassic Park" holiday program continues through to the 27th of January.</p> <p>MTQ's summer holiday program "Dino-rassic Park" continued through January, finishing on the 27th. Highlights during the January period included led activities (Fossil Casting, Dinosaur Sculpture and Footprints of the Past), a Fossil Preparation Lab, and "Up Close Encounters" presented by Ranger Dan from Hands on Wildlife. The specially developed Keeper Talks and Junior Keeper Trail, as well as the Carnosaur Show, Dig Pit, Dinosaur Crafts and other December holiday activities</p>

		were continued through January. The program attracted strong visitation during the six weeks it ran, attracting 19,871 visitors, including approximately 3,760 new MyMuseum members who signed up during the program.
<b>Fossil Lab</b>	January 2014	MTQ's "Dino-rassic Park" holiday program featured a Fossil Preparation Lab which was run during 3 weeks in January. The lab was staffed by a team of MTQ volunteers, under the guidance of Fossil Preparator Paul Stumkat. During this period the volunteers had the opportunity to learn a range of fossil preparation and identification techniques, and the opportunity to work on a range of specimens. Fossil material and the work being conducted in the lab was on show to the public, and this provided opportunity for volunteers and VSO's to engage with the public. The new MTQ Fossil Preparation Team will continue to develop skills, prepare specimens and engage with the visiting public as a permanent part of MTQ's volunteer program.
<b>Discover More Talk</b>	11 February 2014	MTQ's Discover More Talk for February was presented by John Daicopoulos from James Cook University. Mr Daicopoulos delivered an engaging presentation on the history of the understanding and study of gravity, from its earliest conceptions through to the latest developments of String Theory.
<b>Fossil Talk</b>	February 2014	MTQ contract fossil preparator Paul Stumkat, together with Richmond's ex-Deputy Mayor Rob Ivers, delivered an engaging talk on fossil discovery and preparation, and the use of various techniques for the re-construction and interpretation of long extinct species. Paul has been working with MTQ's new Fossil Preparation volunteer team, providing skills and training materials and tools.
<b>Reefscape</b>	February 2014	MTQ volunteers and community members produced an art project entitled Reefscape. Designed to provide a marine theme to the museum's Great Gallery, Reefscape features works of art including knitted coral bommies, schools of hanging fish and a giant prawn. The project was co-ordinated by MTQ Visitor Experience Officer Viv Moran, and aligns with MTQ's newest permanent exhibition, Colour: secret language of the reef.
<b>Taxidermy Display</b>	February 2014	MTQ's taxidermy volunteers compiled a new display this month, highlighting the techniques used and range of specimens produced by the taxidermy team. The display was launched as a special hands-on demonstration produced for a large group of cruise ship tourists, who were provided a tour of the museum on the 6th of February.
<b>Frockstars Event Night</b>	15 March 2014	MTQ conducted a formal opening event for the museum's new Frockstars, Inside Australian Fashion Week touring exhibition on Saturday 15th March. The opening evening was coordinated by Trish Barnard, Senior Curator with a broad cross-section of Townsville's fashion and design community attending during the evening, and special presentations were



		made by the exhibition's Curator Glynis Jones, as well as local designers Kalyn Aslett.
<b>Discover More Talk</b>	16 March 2014	MTQ Discover More Talk for March was delivered on Sunday 16th March by The Powerhouse Museum's Curator Glynis Jones. Ms Jones is the curator of MTQ's currently hosted touring exhibition Frockstars: inside Australian Fashion Week, and provided an engaging and informative tour of this stunning new exhibition, in place of MTQ's regular Tuesday Discover More Talk.
<b>Colour Famil Event</b>	12 March 2014	MTQ conducted, on Wednesday 12th March, a special staff and volunteers familiarisation event for the Museum's latest exhibition Colour, secret language of the reef. With installation recently completed, the BHP Cannington funded exhibition is currently awaiting a formal opening event to be held in May, before it is officially open to the general visiting public.
<b>Science and Engineering Expo</b>	17 March 2014	MTQ Learning Activities Officer Claire Speedie and Sue Valis, Conservator/Collection Manager represented MTQ at this year's James Cook University Careers in Science and Engineering Expo held on Monday 17th March.
<b>School Principals Meeting</b>	6 March 2014	MTQ hosted, on Thursday 6th March, a networking meeting of the Mount Stuart cluster (local Townsville) of the QASSP (Queensland Association of State School Principals), and gave about 10 principals a preview tour of the new Colour, secret language of the reef exhibition.
<b>Fashion Zen Workshop</b>	8 March 2014	MTQ conducted, on Saturday 8th March, a charged Fashion Zen Workshop delivered by Liz Simonsen Fashion Zen Style is an affordable personal stylist and fashion consultant service for woman who want to look their best and find their personal style. Liz Simonsen, who is Fashion Zen Style, has a degree in art and a love of fashion. She has been styling woman in the Townsville area for the last 12 months, has helped organise fashion parades for various charities and was involved in styling work with last year's Townsville Fashion Festival. Liz runs a Facebook blog where she posts on latest trends, style advice and designers.
<b>Colour Teacher Famil</b>	13 March 2014	MTQ hosted, on Thursday 13th March, a teacher familiarisation for teachers throughout our community pass catchment. 9 teachers and 1 pre-service teacher from a range of schools, including 2 secondary teachers, 5 primary teachers, 1 early childhood teacher, from Townsville and Charters Towers, were given a preview of the new Colour, secret language of the reef exhibition.
<b>Reef Buddies Workshop</b>	15 March 2014	MTQ conducted, on Saturday 15th March, a charged Reef Buddies Workshop delivered by fibre artist and designer Katlyn Aslett. Aimed at a young audience, the workshop allow participants to create a coral reef inspired buddy in a felt

		workshop, working with hand dyed wool, soap and water, and a needle and thread.
<b>Custom Ink Workshop</b>	15 March 2014	MTQ conducted, on Saturday 15th March, a charged Custom Ink Jeans Workshop delivered by Freelance artist Andrew Huxley. The workshop demonstrated illustration techniques using markers to help participants customise their own jeans.
<b>Design Studio Workshop</b>	16 March 2014	MTQ conducted, on Sunday 16th March, a Design Studio Workshop delivered by local artican couturier Katelyn Aslett. Katelyn guided participants through the design process and the textile techniques involved in creating unique wearable fabric artwork, working with hand-dyed wool, soap and water. As an optional and exclusive workshop extra, participant's original designs were photographed and printed onto fabric in a process called sublimation, creating a unique printed fabric.
<b>Upcycling Workshop</b>	29 March 2014	MTQ conducted, on Saturday 29th March, a charged Upcycling Workshop delivered by textile artist Annette Sibson. Annette demonstrated insertion and dyeing techniques to bring tired textiles back to life. Starting with a plain white t-shirt or other woven piece of clothing, participants used various materials to upcycle their clothing, including cotton and thread, lace doilies and buttons, and even unusual materials such as rusted nails and bottle caps.
<b>Harmony Day</b>	22 March 2014	MTQ conducted, on Saturday 22nd March, its third annual Harmony Day event. Attracting some 500 visitors (and producing 48 new members) the event is delivered in partnership with community members and the Townsville Multicultural support group, and showcases food, fashion, customs, craft and culture from the diverse range of multicultural community groups that call Townsville home.
<b>Discover More Talk</b>	8 April 2014	MTQ Discover More Talk for April was delivered on Tuesday 8th April by MTQ's VSO Dr Kamelia Carr. Dr Carr, who was born in Tehran, spoke on her new exhibition, Knotting the Grass, which was opened last month. The exhibition consists of paintings and handicrafts that represent aspects of Iranian culture that remain important to Dr Carr – music, dance, ethnicity and the celebration of the Iranian New Year.
<b>Fashionistarz Holiday Program</b>	5 – 21 April 2014	MTQ's school holiday program for Easter was entitled Fashionistarz, and ran from the 5th to the 21st of April. The holiday program had a fashion theme, and was developed to link with MTQ's current feature temporary exhibition Frockstars, Inside Fashion Week, from the Powerhouse Museum. The holiday program features a range of art, craft and design activities, included a number of free and charged workshops led by designers and artists from within the local community. The Fashionistarz holiday program attracted a total of 4,814 visitors over the two week period. The museum and holiday

		program was closed for one day (Sunday 13th April) during the program due to the impact of Tropical Cyclone Ita.
<b>Bounty Talk</b>	30 April 2014	MTQ hosted local historian Gail Gunn who delivered a talk on the subject of the HMS Bounty on Wednesday 30th April. Gail compared the varying accuracy of different Hollywood interpretations of the story of the Bounty Mutiny, and argued that the unadulterated HMS Bounty story had everything needed to be a Hollywood Blockbuster – “adventure, nice scenery, sex, aggression, betrayal, sex and violence.”
<b>Refashion Studio Workshop</b>	5 April 2014	MTQ conducted, on 5th April, a Refashion Studio workshop to support our current Frockstars temporary exhibition. The workshop was aimed at teenagers, and demonstrated tricks and tips on upcycling and revamping clothes.
<b>Catwalk Creations Workshop</b>	7 and 8 April 2014	MTQ conducted, on 7th and 8th April, two Catwalks Creations workshops to support our current Frockstars temporary exhibition. The workshops allowed young members to become “fashion designers”, and to create a unique fashion collection using Crayola's Catwalk Creations kits. The kits were kindly provided free of charge by Crayola, and valued at \$50 each. One of these workshops was conducted exclusively for MTQ MyMusuem Members, and the other was conducted for general visitors and charged at \$5 per person.
<b>Gamer Fashion Workshops</b>	7 and 14 April 2014	MTQ conducted, on the 7th and 14th of April, two Gamer Fashion workshops to support our current Frockstars temporary exhibition. The workshops featured Pixel inspired fashion for gamers, and allowed participants to create a T-shirt design or accessories with fabric markers and pixelated patterns. Thw workshops wer charged at \$5 per person
<b>Bling It Workshop</b>	9 April 2014	MTQ conducted, on the 9th of April, a Bling It! Workshop to support our current Frockstars temporary exhibition. The workshop allowed participants to experiment with a variety of techniques to create decorative textile pieces such as pompoms, flowers, tassels which can be used on clothing.
<b>Sunprints Workshops</b>	10 and 17 April 2014	MTQ conducted, on the 10th and 17th of April, two Sunprints workshops workshop to support our current Frockstars temporary exhibition. These workshops allowed participants to create an original print on light-reactive fabric using the Sun. These workshops were charged at \$5 per person.
<b>Beading Workshop</b>	11 April 2014	MTQ conducted, on the 11th of April, a Beading with Bits and Bobs workshop to support our current Frockstars temporary exhibition. The workshop allowed participants to use a variety of likely and not so likely objects to create unique fashion jewellery.

<b>Custom Kicks Workshop</b>	12 April 2014	MTQ conducted, on the 12th of April a Custom Kicks workshop led by local artist Andrew Huxley. This workshop led participants through the process of turning plain canvas shoes into wearable works of art. The workshop was charged at \$10 per person.
<b>Tarn Weaving Workshop</b>	15 April 2014	MTQ conducted, on the 15th of April, a Tarn Weaving workshop to support our current Frockstars temporary exhibition. The workshop allowed participants to recycle t-shirts into yarn for weaving and to create funky woven textiles for hats and bags.
<b>Tye Dye Workshop</b>	16 April 2014	MTQ conducted, on the 16th of April, a Tie Dye with Markers workshop to support our current Frockstars temporary exhibition. The workshop allowed participants to use marker pens and experiment with a range of techniques to create original and individual fabrics for making flowers, pockets, purses, pencil cases etc
<b>Discover More Talk</b>	13 May 2014	MTQ's Discover More Talk for May was delivered by MTQ Coral Researcher Dr Paul Muir. Dr Muir discussed some of his latest discoveries researching corals in the deep water Mesophotic Zone. Located beyond the reach of recreational divers, these corals grow in the zone of "middle light" at the depths of the reef slope, and are being explored by Dr Muir using innovative new Remotely Operated Vehicle technology.
<b>Family Fun Weekend</b>	31 May and 1 June 2014	MTQ delivered, on 31st May and 1st June, a family fun weekend launching to the community the museum's new permanent exhibition "Colour, Secret Language of the Reef". In addition to showcasing the new exhibition, the weekend included a range of colour-themed art, craft and science activities, as well as tours of the museum's coral collection led by MTQ Acting Curator of Corals Dr Paul Muir.
<b>Formal Opening Event - Colour</b>	30 May 2014	MTQ formally opened, on Friday May 30th, its new permanent exhibition "Colour, Secret Language of the Reef". The opening was attended by the Hon. Ian Walker, Minister for Science, Information Technology, Innovation and the Arts, by Mrs Laura Tyler, representing the exhibition's financial sponsor BHP Billiton Cannington, by QM Board Chair Mr David Conroy, and by other VIP's, contributors and community members.
<b>Colour exhibition preview</b>	29 May 2014	MTQ hosted, on 29th May, an exclusive preview visit to the new "Colour, Secret Language of the Reef" exhibition by Currajong State School. The visit by 25 year 4 students was a prize won by the school and supported by BHP Billiton Cannington as part of their involvement as the exhibition's sponsor. The students also enjoyed other led activities including the Seafarers Ticket and Running Out the Gun.



<b>Fashion Workshops</b>	10 – 12 May 2014	MTQ hosted a number of charged Master Classes during the month of May, conducted in support of the “Frockstars: Inside Australian Fashion Week” exhibition. On 10th May a “Fashion Zen” workshop was led by local designer Liz Simonsen. On 11th May a “Steam Punk Jewellery” workshop was led by local artisan Roz Asquith. On 12th May a “Fascinating Fascinators” workshop was led by Hester Jarvis. These were the final workshops from a series that began on the 8th of March.
<b>Heritage Day</b>	18 May 2014	MTQ was represented at this year’s Townsville City Council Heritage Day held on the 18th of May. Museum volunteers and VSO’s showcased heritage loans kits and other educational items and programs from the museum, including the new volunteer-run paleontological laboratory.
<b>Discover More Talk</b>	10 June 2014	MTQ’s Discover More Talk for June was delivered by CSIRO Researcher Dr Matt Curnock. Dr Curnock present the results of a comprehensive survey of tourist perceptions of the Great Barrier Reef. Key findings from the research have so far included identifying the importance of maintaining the Reef’s biodiversity and aesthetic beauty for attracting tourists, and differences between tourists’ perceptions of threats to the Reef and those that have been identified through scientific research.
<b>Creepy Crawlies Alive</b>	28 June – 13 July 2014	MTQ’s feature Creepy Crawlies Alive school holiday program commenced at MTQ on the 28th of June. The program features interactive displays of live insects, reptiles, amphibians and other Creepy Crawlies, as well as a range of art, craft and led educational activities. A special feature is the opportunity for visitors to try edible insects, as part of discussions of food sustainability. The program ran for two weeks, finishing on 13th July.
<b>World Oceans Day</b>	8 June 2014	On Sunday 8th June, Magnetic Island celebrated World Oceans Day at XBase, Nelly Bay, with a full-day program of activities. Dr Robyn Cumming held a stall together with AIMS and Reef HQ, with displays of marine animals and plants, and information pamphlets. Robyn presented a talk on the biodiversity of coral reefs and highlighting the collections and biodiversity research that goes on at the Museum of Tropical Queensland.
<b>Frontier Town Book Launch</b>	5 June 2014	MTQ hosted, on the 5th June, the launch of a new local history book “Frontier Town, A History of Early Townsville and Hinterland 1864-1884” by historian Helga Griffin. Published in partnership with Townsville Museum, the book provides a new and detailed insight on Townsville’s early year, and is of particular relevance as Townsville approaches its 150th year. The event was attended by over 100 people, including Mayor Jenny Hill and Geoff Hanson from Townsville Museum. Some 62 signed copies of the book were sold during the event

<b>HEPPPP Schools Teacher PD</b>	26 June 2014	MTQ hosted on 26th June, in partnership with James Cook University, a teacher professional development evening for staff from four HEPPPP (Higher Education Participation and Partnership Program) schools. These schools have been identified as those with the highest and where need where their staff, students and community can benefit from a partnership of shared resources and support. Guided by MTQ Learning Activities Officer Claire Speedie, the group visited new temporary and permanent exhibitions at the Museum, including the recently opened Colour: Secret Language of the Reef exhibition.
<b>Teddy Bears Picnic</b>	14 June 2014	MTQ Volunteers attended an information stand at Strand Park as part of the PakMag Teddy Bear's Picnic Event. MTQ's winged mascot Beau the Ulysses Butterfly also made an appearance.
<b>NAIDOC Week</b>	25 June – 6 July 2014	MTQ Senior Curator Trish Barnard developed a small display for this year's NAIDOC week which was opened in the Great Gallery on the 25th of June.



**MUSEUM OF TROPICAL  
QUEENSLAND**  
TOWNSVILLE

# creepy crawlies alive!

See some of North Queensland's  
weird and wonderful creeping,  
crawling creatures alive, right  
before your eyes at MTQ!



**SCHOOL  
HOLIDAY PROGRAM**

**28 June – 13 July 2014**

Check out the full program at [mtq.qm.qld.gov.au](http://mtq.qm.qld.gov.au)

Museum of Tropical Queensland

70-102 Flinders Street, Townsville | 07 4726 0600 | [mtq.qm.qld.gov.au](http://mtq.qm.qld.gov.au) |



Queensland  
Government



QUEENSLAND  
MUSEUM NETWORK

Townsville City Council is the major sponsor of *Creepy Crawlies Alive!* The support of Townsville, Burdekin, Charters Towers and Hinchinbrook councils provides free and discounted entry for their local residents.

**28 JUNE – 13 JULY**

Things to do ALL day, every day

## Creepy Crawlies Alive! Bug Houses

Take a tour around the bug houses and learn about North Queensland's amazing insects. Learn how to keep your own creepy crawly alive at home.

## Sensory Trail

Insect senses are very different to our own. Follow the sensory trail, and discover how insects experience the world around them.

## Creepy Colours

Some creepy crawlies use cryptic colours to hide, while others show off with bright colours and patterns. Add your own colourful critters to our Creepy Colours habitat.

## Creepy Crafts

Creep on down to our craft tables, to cut and colour your own colourful Creepy Crawlies.

## "Little Critters" play pen

Just for the little ones – creep and crawl your way through our special play area.

## Macro Marvels

Marvel at these extraordinary close-up images of North Queensland's most magnificent creepy crawlies.

**28 JUNE – 13 JULY**

Every Day

## Creepy Crawly Floor Talks

10am, 11.30am, 1pm and 3pm

Discover something new as our Museum's insect keepers and researchers talk about their favourite animals. Try holding one of our creepy crawly insects – if you feel brave!

## Creepy Crawly Culinary Class

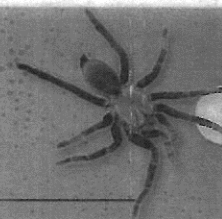
11am, 12.30pm and 2pm

Discover how insects and other creepy critters may be the future for feeding a hungry world. Try a crispy cooked creepy critter – you might be surprised!

## Beau the Butterfly and Professor Pinboard

11.30am

Will Beau the Butterfly escape the net of Professor Pinboard, or will he become a permanent part of the Professor's insect collection? Keep an eye out – Beau might need your help!



# creepy crawlies alive!

**30 JUNE – 4 JULY, 7 JULY – 11 JULY**

Weekdays only

## Radical Reptiles Display

10.00am – 2.30pm (excluding Show Day Monday)

Check out Ranger Dan's live creepy crawlies including snakes, lizards and frogs.

## Reptile Talks

10.30am, 12.00pm and 1.30pm (excluding Show Day Monday)

Come and meet some of Ranger Dan's seriously slithery reptile friends as he talks about his favourite creepy crawlies.

## Face Painting

10.00am – 12noon (30 June – 4 July only)

Be transformed into an interesting insect, spectacular spider or radical reptile.

## Polly's Crafts Sand Art

10.00am – 2.30pm (7 July – 11 July only)

Cost: \$3.50

Create your own creepy crawly inspired sand-art masterpiece to take home.

## Bug Bits

10am & 12pm (1 July – 4 July only)

Explore the anatomy of bugs through games and craft and test your memory with a giant insect "match-up" game. (5-12 years)  
Bookings required.

## A Bug's Life

10am & 12pm (7 July – 11 July only)

An interactive exploration of the amazing life cycles of insects. (5-12 years)  
Bookings required.







## Humahoid Discovery

Wonders of the human body

7 June - 24 August

Complete with a bed of nails and fart machine, Scitech's *Humahoid Discovery* exhibition takes an informative and amusing look into the human body to set the record straight on some of the most pressing questions about the body, such as, what makes you fart?

The exhibition is made up of 25 interactive science exhibits designed to take visitors on a journey through the human body. Highlights include how long intestines are, how senses work, how muscles interact together, as well as the complex world of the respiratory system.

More daring visitors can test their nerves with over 2,000 nails delivering a spine-tingling experience on the bed of nails exhibit!

scitech

Perth Australia

# BACKYARD SAFARI

PHOTOGRAPHY COMPETITION

THE MUSEUM OF TROPICAL QUEENSLAND'S  
Backyard Photography Safari Competition  
IS NOW OPEN!



Head out to the dark unmapped heart of your suburban backyard, bushland or beach with camera and pith helmet in search of small game and other inspiring and intriguing subjects.

Entry is free, and there are some great prizes to be won including **one-on-one workshops with professional award-winning wildlife photographer and Canon Master, Darren Jew.**

Each week entries will be featured on our Facebook page, and the winners and selected entries from each category will be on show in a special exhibition at the Museum of Tropical Queensland.

For more information and entry details hike across to the MTQ website: [mtq.qm.qld.gov.au](http://mtq.qm.qld.gov.au).

General T&Cs:

- Age categories: Primary school (5-12 years) / Secondary school (13-17 years) / Open (18 years+).
- Entries will be accepted any time after 28 June 2014.
- Closing date for entries is 31 October 2014.
- Copyright for the photographs submitted as part of this competition remains with the photographer.



## DISCOVER MORE WORKSHOPS AND TALKS

### Pinch Pot Creepy Crawlies

Tuesday 1 July, 10am - 12noon, (8+ years)

Cost: \$10, \$5 MyMuseum members

Artist potter, Fiona Banner, will show you how to make creepy crawlies using the ancient technique of pinching clay. Make a creepy crawly or decorate a pot with creepy crawlies.

### Creepy Crawly Photo Safari - an ABC Open activity

Wednesday 2 July, 9.30am - 12.30pm (10+ years, adults)

Cost: Free with entry

Join Michael Bromage from ABC Open on a Creepy Crawly Photo Safari and learn how to take close-up photos of some of our mini mega-stars "in the wild". The group will meet at MTQ for a "how to" session, then head out to Queens Gardens (own transport) to capture some creepy crawlies on "film". This safari is suitable for smart phone and camera buffs, and access to a laptop or iPad (with internet access) will be required to finish off your photos or short film back at the Museum. At the end of the safari, participants will have the chance to upload their work to the ABC Open website. (Minimum age is 10, with parental supervision during the activity.)

### Saving Townsville's Children - July's Discover More Talk

Tuesday 8 July, 12noon (adults)

Cost: Free with entry

In Queensland at the beginning of the twentieth century, just over ten per cent of infants died before their first birthday.

This talk by local historian Trisha Fielding explores what effect, if any, the Infant Welfare Movement had on infant mortality in Townsville between 1895 and 1930 by looking at what particular health services were available to mothers and their infants during this period; and at the main causes of death in infants under one year of age at this time.

### Townsville's Fine Feathered Friends

Wednesday 9 July, 12noon (10+ years, adults)

Cost: Free with entry

Join Townsville birding and photography enthusiast Ian Boyd for a presentation on birds in the Townsville region, including fascinating stories such as the mating rituals of the Bowerbird, and the special relationship between the parasitic mistletoe plant, and the Mistletoebird.

Find out the secrets of capturing these small and elusive subjects on camera, and the tools and techniques needed to create professional-quality images.



# REEF DREAMING CULTURAL EXPERIENCE

Experience authentic cultural dancing, food tasting and a tour of Reef HQ Aquarium through the eyes of a Traditional Owner.

• Saturday 28 June (10am - 12pm) OR Sunday 29 June (10am - 12pm)

**Package 1 - Reef HQ Aquarium Member price:** \$10 per Adult  
\$5 per Child

**Package 2 - Cultural Experience**  
**General Admission price:** \$36.50 per Adult  
\$17.80 per Child

(includes all day entry into Reef HQ Aquarium)

Phone 07 4750 0800 or email [info@reefHQ.com.au](mailto:info@reefHQ.com.au)

Bookings need to be confirmed by 25 June 2013



## BOOK NOW - DON'T MISS OUT!



# Reef Dreaming at Reef HQ Aquarium

Experience Reef HQ Aquarium these school holidays through the eyes of a Traditional Owner.  
Saturday 22 June to Sunday 7 July 2013, 10am to 12pm daily.

### Join...

a Traditional Owner  
as they share their  
knowledge of Great  
Barrier Reef marine life

### Discover...

local Dreamtime stories  
including "Yamanie" the  
Rainbow Serpent

### Learn...

how to roll string and make your  
own beach hibiscus bracelet

### Get crafty...

create your own fiddler  
crab and mudskipper

### Plus lots of other unique Great Barrier Reef cultural activities!

The school holiday program is free with Reef HQ Aquarium general admission or membership  
- a gold coin donation is appreciated with all monies going to the Reef HQ Aquarium Turtle Hospital.

Children must be accompanied by an adult. Bookings are not required for groups of less than ten.

Illustrations by Patricia Galvin and Shenoa Sultana, Mamu Traditional Owners.



2-68 Flinders St Townsville QLD 4810 P 4750 0800 [www.reefHQ.com.au](http://www.reefHQ.com.au)  
Become a fan of Reef HQ Great Barrier Reef Aquarium on Facebook!



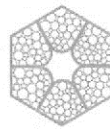
Australian Government  
Great Barrier Reef  
Marine Park Authority

Funded by the Australian Government's Caring for our Country



reefHQ  
GREAT BARRIER REEF  
AQUARIUM





**MUSEUM OF TROPICAL  
QUEENSLAND**  
TOWNSVILLE

# CAMO KIDS

SCHOOL  
HOLIDAY  
PROGRAM

22 JUNE – 7 JULY

## Enlist in our hands-on *Camo Kids* holiday program:

- inspect an Army Bushmaster, UNIMOG, amphibious LARC and historic military vehicles
- see an M777 (big artillery gun) up close
- see a bomb detection dog demonstration
- test out Army equipment
- camo face painting
- 2RAR and 3RAR military Historical Collections
- dress up in Army uniforms
- displays and presentations by the North Queensland Historical Re-enactment Society
- hear stories from real soldiers about active duty and life in the Army.



FOR FULL PROGRAM DETAILS VISIT:

[WWW.MTQ.QM.QLD.GOV.AU](http://WWW.MTQ.QM.QLD.GOV.AU)

### Museum of Tropical Queensland

70-102 Flinders Street, Townsville

07 4726 0600 | [mtq.qm.qld.gov.au](http://mtq.qm.qld.gov.au) |



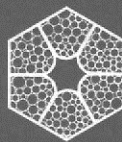
Queensland  
Government



QUEENSLAND  
MUSEUM NETWORK

Townsville City Council is the major sponsor of Camo Kids.

The support of Townsville, Burdekin, Charters Towers and Hinchinbrook councils provides free and discounted entry for their local residents.



**MUSEUM OF TROPICAL  
QUEENSLAND**  
TOWNSVILLE

# FASHIONISTARZ

holiday program

## 5 - 21 April

**9.30am - 5pm daily  
(closed Good Friday)**

### CHANNEL YOUR INNER FASHION DESIGNER:


- Hands-on workshops with local artists and designers
- Make your own jewellery and accessories
- Create your own fabric prints
- Learn different textile techniques
- Model your creations on the red carpet

Townsville  
family annual  
membership  
**\$38**

Full program details online -  
[mtq.qm.qld.gov.au](http://mtq.qm.qld.gov.au)

**Museum of Tropical Queensland**

70-102 Flinders Street, Townsville

07 4726 0600 | [mtq.qm.qld.gov.au](http://mtq.qm.qld.gov.au) | 



Queensland  
Government



QUEENSLAND  
MUSEUM NETWORK

Townsville City Council is the major sponsor of *Fashionistarz*. The support of Townsville, Burdekin, Charters Towers and Hinchinbrook councils provides free and discounted entry for their local residents.



## 21 SEPTEMBER – 7 OCTOBER

Things to do ALL day, EVERY day

### Discovery Passport Competition

Take a Queensland Rail journey and stop at our iconic stations to complete your Discovery Passport. Collect a free model train at the front desk with each completed passport (while stocks last).

### Making Tracks

Tracks, trains, K'nex and dress-ups for older children to construct their own Great Northern Railway.

### Go Loco

Paper craft - make a locomotive, tool-belt, Guard's hat, marker lamp or Dining Car Attendant's apron.

### The Workshop

Build a wooden train using REAL TOOLS. Cost \$10 payable at the Museum shop. (Adult supervision and closed-in shoes required.)

### The Caboose (0-5 years)

Puzzles and train toys for little ones. (Adult supervision required.)

### Our Railway Heritage

Displays and stories about our local railway history from the Townsville Railway Historical Group and the Townsville Heritage Rail Group.

### All Aboard!

Come aboard some of the model trains from the Townsville and District Society of Model Engineers' train park.

## 21 SEPTEMBER – 7 OCTOBER

Things to do EVERY day at special times

### Running out the Gun (11am)

Join the Gun Captain's Crew and fire the six pounder cannon. (Eight years and older, closed-in shoes required.)

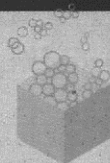
### Beau the Ulysses Butterfly (11.30am)

Come and say 'hi' to our cuddly mascot, Beau the Ulysses Butterfly who is back in the rainforest as beautiful and bright as ever.

### Running out the Gun (2.30pm)

Join the Gun Captain's Crew and fire the six pounder cannon. (Eight years and older, closed-in shoes required.)

Join our **MYMUSEUM** MEMBERSHIP PROGRAM for unlimited entry and great benefits.



## 23 SEPTEMBER – 27 SEPTEMBER

## 30 SEPTEMBER – 5 OCTOBER

Weekday Events

### Railway Science (10.15 – 10.45am)

Learn about the science of trains, tracks and movement in these pop-up science demonstrations.

### Ride Krank the Hand Car

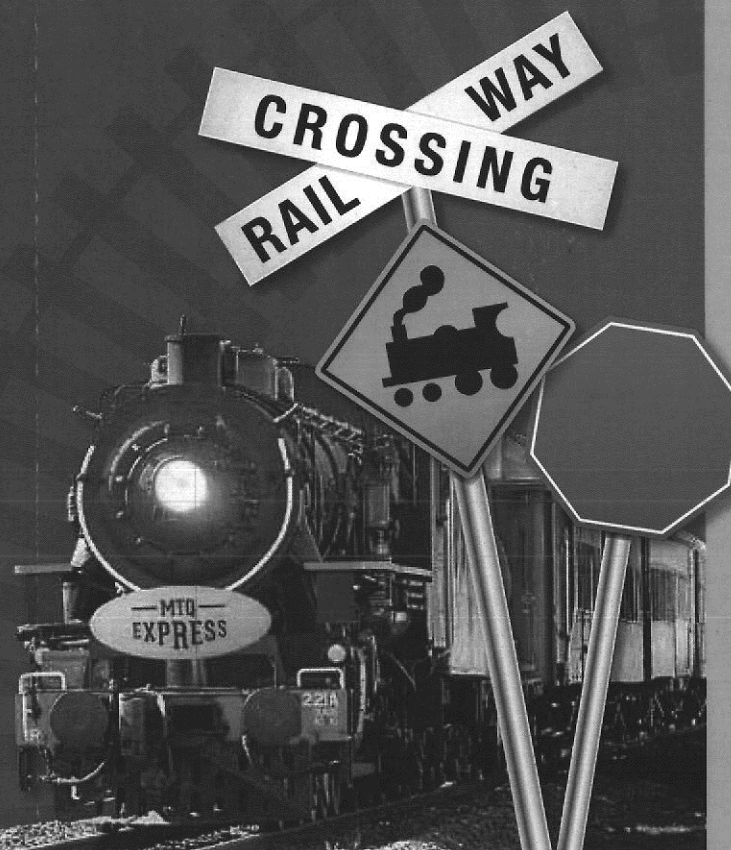
Daily from Thursday 16 September. (Adult supervision and closed-in shoes required.)

## 28 & 29 SEPTEMBER

Weekend Events

### Choof & Chuff (10am – 2pm)

See working Bradford and Sundial Engines and a power hacksaw from the North Queensland Machinery Preservation Society. Talk to the guys who find and restore these old beauties. The engines will be on display from Monday 30th September to Monday 7th October.



# RAILWAY TALKS 12 NOON

## TUESDAY 24 SEPTEMBER

### The Magic of Steam Trains

Brian Lane, heritage rail enthusiast

## WEDNESDAY 25 SEPTEMBER

### The Magic of Steam Trains

Brian Lane, heritage rail enthusiast

## THURSDAY 6 SEPTEMBER

### A Matter Of Gauge

Discover a time when States were divided by the width of their rails - Patrick Hodgson, a local railway historian

## FRIDAY 27 SEPTEMBER

The Rail Trail Movement and the preservation of old railway lines

Robert de Jong, MTQ Staffer and train buff

## TUESDAY 1 OCTOBER

### The Prodigies of Travel

How the Commissioner for Railways undertook his travels in the northern part of Queensland a century ago, (plus some associated adventures as well) - Greg Hallam, Queensland Rail historian

## WEDNESDAY 2 OCTOBER

### An Unknown War

The Queensland Railways and the Great War, (and a North Old railway VC recipient) - Greg Hallam, Queensland Rail historian

## THURSDAY 3 OCTOBER

### Guns, Roses and Steel

Patrick Hodgson, local historian

## FRIDAY 4 OCTOBER

The Rail Trail Movement and the preservation of old railway lines

Robert de Jong, MTQ Staffer and train buff



## DISCOVERY PASSPORT COMPETITION

Win a family weekend  
getaway for 4 to Cairns!

Take a Queensland Rail journey around the Museum, stop at our iconic stations to complete your Discovery Passport & you could win a family weekend getaway\* for 4 (valued at over \$1,100) to Cairns thanks to Queensland Rail Travel and the Park Regis Cairns.

Why drive to Cairns for the weekend and put up with the road works when you can relax in air-conditioned comfort, enjoy some quality family time and watch the world roll by on The Tilt Train? Our winners will travel on the Sunlander from Townsville to Cairns on a Friday afternoon and on the Tilt Train on the trip home on the following Sunday.

The winning family will stay for two nights in a luxurious two bedroom apartment at Park Regis Piermonde. The apartments feature huge bathrooms, spa or jet bath, full kitchen facilities, broadband internet, DVD players and oversized balconies. Situated in the city heart, guests can enjoy the tropical vibe of central Cairns and The Esplanade, or take a trip to the reef or rainforest (at own cost) on Saturday.

### How to enter:

- Visit the Museum of Tropical Queensland during the Making Tracks holiday program.
- Pick up your free Discovery Passport at the front desk.
- Find the iconic stations throughout the Museum, uncover the clue at each one and write it down in your Discovery Passport.
- Write your contact details in your Discovery Passport and place it in the entry barrel at the front desk.

The winner will be announced in MTQ's November enews.

\*The prize must be redeemed before 23 December 2013 and is not redeemable for cash. Full rules and conditions available at [www.mtq.qm.qld.gov.au](http://www.mtq.qm.qld.gov.au).

**QueenslandRail**  
Travel

**PARK REGIS**  
CAIRNS



## WHAT'S YOUR RAILWAY STORY?

You're invited to join us in the Museum's Club Car to share and relive your railway stories.

We are giving you the chance to relive your memories with other men and women who lived and worked on the railways. And we want to record some of those memories and share them with our visitors and community.

Bring your railway photos, memorabilia

and stories to the Club Car from 10am to 2pm every day from Saturday 21 September to Monday 7 October.



## RIDING THE RAILS

Special MyMuseum Members' Only Event

All aboard for a free, fun evening of good old-fashioned family entertainment with railway-themed games and activities.

Be the first to ride our new interactive "toy", Krank the Hand Car, and try your hand at track laying to get Krank from one side of the Great Gallery to the other.

The fastest "Krank" family will win a Texas Longhorn Wagon Tour (valued at \$220) at Leighton Park, Charters Towers.

A sausage sizzle (at own cost) will be available to feed the hungry hordes from 5-6pm.

### When

Wednesday 25 September, 6-7.30pm

### RSVP

[mymuseum.mtq@qm.qld.gov.au](mailto:mymuseum.mtq@qm.qld.gov.au)  
by Friday 20 September



**TEXAS LONGHORN**  
WAGON TOURS & SAFARIS



**MUSEUM OF TROPICAL  
QUEENSLAND**  
TOWNSVILLE

# MAKING TRACKS

HOLIDAY PROGRAM

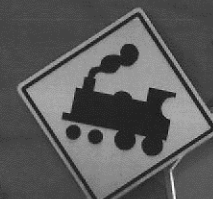
21 SEPTEMBER

7 OCTOBER

## Get foot-tooting

down to the Museum of Tropical Queensland and discover the magic of trains with hands-on construction projects, puzzles, dress-ups, talks and more.

Complete your Discovery Passport & you could win a family weekend getaway\* for 4 to Cairns thanks to Queensland Rail Travel and the Park Regis Cairns.



**MUSEUM OF TROPICAL  
QUEENSLAND**

### Museum of Tropical Queensland

70-102 Flinders Street, Townsville  
07 4726 0600  
[mtq.qm.qld.gov.au](http://mtq.qm.qld.gov.au) |



Townsville City Council is the major sponsor of Making Tracks. The support of Townsville, Burdekin, Charters Towers and Hinchinbrook councils provides free and discounted entry for their local residents.

# New Year has been a scorcher

MICHAEL SAUNDERS

michael.saunders@news.com.au

CHARTERS Towers residents are enduring one of the hottest starts to a new year with temperatures consistently reaching more than 40 degrees.

The Gold City sweated through its fifth hottest January day on record last Sunday with the mercury rising to 42 degrees and 50 per cent relative humidity.

Residents did all they could to evade the heat by spending the day by pools, rivers, swimming holes or in the comfort of airconditioning.

One local tested the scorching Sunday heat by baking chocolate chip cookies in his car and posting the results on a

community website.

The creative cook put a tray of uncooked biscuits in his car and left them for two and a half hours before returning to find them baked to perfection.

Other residents posted photos on Facebook of eggs and other foods cooked by the sun's strength.

The heat eased slightly yesterday with a maximum of 38 degrees but the relative humidity climbed to 65 per cent - the highest so far this month.

Townsville weather bureau senior meteorologist Doug Fraser said the above average temperatures are being caused by an inland trough combined with northerly winds and clear conditions.

Mr Fraser said temperatures will continue to ease over the coming days however there is a high chance of afternoon thunderstorms.

**“We are looking at nice conditions on the way.”**

Doug Fraser, meteorologist

“We have seen some big storms due to the heat and humidity but they have been just west of Charters Towers,” he said.

“The good news is we are looking at nicer conditions on the way with south-east winds pushing into the area around Wednesday and Thursday.

“That is also expected to trigger off more thunderstorm activity.”

While the thunderstorms may offer a slight reprieve, Mr Fraser said the outlook for drought-breaking rain remains grim.

Despite monsoonal activity is expected to take place at the end of this week, Mr Fraser believes it will only affect the Northern Territory and maybe north-west parts of Queensland.

“So far not much is happening with the monsoonal trough,” Mr Fraser said.

“The models are developing a burst of monsoonal rain across the Equator into the end of the week and the weekend,” he said.

“It may move into western gulf parts on Sunday or Monday but there is a small chance we will see a cyclone out of that affect the gulf areas.”

“The overall situation doesn't look promising for rain over the wet season. But it is just a matter of a decent low pressure system developing and heading inland that could bring rain.”



## Fatal traffic crash east of Hughenden

A MAN was killed when his truck rolled 10km east of Hughenden on Sunday.

The man was travelling west on the Plinders Highway at around 5.45pm when the truck left the roadway and rolled.

It is believed the 32-year-old man, who was the sole occupant of the vehicle, was trapped inside the vehicle for some time before he died at the scene.

Police said a passing motorist called triple 0 after finding the man trapped in the vehicle.

Queensland Fire and Rescue Service crews worked to free him but he died before paramedics could reach him.

The highway was closed for several hours while crews were in attendance.

The Forensic Crash Unit was called in from Townsville to investigate but the cause of the single vehicle crash.

## Jimmy walks for childrens' cancer

KATRINA HINSCHEN

katrina.hinschen@news.com.au

JAMES 'Jimmy' Harrington welcomed the new year in at Charters Towers last week during his 18,000km walk around Australia, raising money and awareness for The Brainchild Foundation.

Jimmy, 20, was inspired to undertake the walk after meeting Emily Crook in 2010 while she was undergoing treatment for brain cancer.

Although the young girl lost her battle in August 2011, her courage inspired Jimmy to do something to help other children with cancer and he has set a goal of raising \$300,000.

Jimmy started his walk in Adelaide in May 2013, has covered 9500km, been through 10 pairs of shoes, had an operation on an ingrown toenail in Darwin and raised \$65,000.

“It's been good. Big,” Jimmy said.

“There's been a lot of good

and bad moments, but mostly good.

“Hopefully we can raise a lot more on the east coast.”

Jimmy has been joined on the walk by his 18-year-old brother Ryan, his parents Chris and Debbie, a scout leader and Emily's grandfather.

They said they have met a lot of good people along their travels.

“On Christmas Day, just outside Hughenden, a farming couple drove to us with a plate of cold meat, a six pack of beer and a donation,” Mr Harrington said.

“That meant so much to us. It was better than baked beans and water.”

Jimmy left for Townsville on Friday morning and arrived on Sunday.

He said he was looking forward to seeing the coast and jumping in the ocean.

To help Jimmy reach his goal to make a difference in the life of a child with brain or spinal cancer visit <http://www.jimmywalkforbraincancer.com/>.



Jimmy Harrington stopped over in the Towers for New Year's Eve during his around-Australia walk for The Brainchild Foundation.

Picture: SUPPLIED

## Firies urge vigilance

FIREFIGHTERS across North Queensland are asking local landholders to take the necessary precautions with heightened fire conditions expected this week.

Queensland Fire and Emergency Services (QFES) northern regional manager Ken Beasley said crews were actively monitoring a number of fires within the area.

“With heightened fire conditions on the way it is important people ensure all fires are extinguished to prevent them from escaping and potentially threatening lives and property,” he said.

“Firefighters have been working extremely hard over the Christmas and New Year break to ensure the safety and wellbeing of all Queenslanders and it's important residents also do their part.”

Mr Beasley said while crews will ensure current fires are burning safely, residents should exercise extreme caution using power tools, camp fires and barbecues.

## DINO-RASSIC PARK

SUMMER HOLIDAY EXPERIENCE

14 Dec 2013 – 27 Jan 2014  
9.30am–5pm

Visit our dino-riffic animatronic wildlife park!

- Dino keeper talks
- Dinomite the Carnosaur live shows
- Talks by Ranger Dan, Dinosaur Keeper
- Meet real live dinosaur relatives
- Junior Dino Keeper trail
- Fossil preparation lab demonstrations
- Dino dig pit and crafts

Townsville family annual membership \$38.  
*Closed Christmas Day.*

Museum of Tropical Queensland  
70-102 Flinders Street, Townsville 07 4726 0800 | [mqnq.qld.gov.au](http://mqnq.qld.gov.au)

Townsville City Council is the major sponsor of Dino-rassic Park. The support of Townsville, Burdekin, Charters Towers and Hinchinbrook councils provides free and discounted entry for their local residents.





Hon Andrew Cripps MP  
Minister for Natural Resources and Mines

BURDEKIN SHIRE COUNCIL
File ID No. 468
5 DEC 2014
Document No. ....
Retention Period .....

Level 17 QMEC Building  
61 Mary Street Brisbane QLD 4000  
PO Box 15216 City East  
Queensland 4002 Australia  
Telephone +61 7 3199 8215  
Facsimile +61 7 3224 2491  
Email nrm@ministerial.qld.gov.au

Cr Bill Lowis  
Mayor  
Burdekin Shire Council  
PO Box 974  
AYR QLD 4807

Dear Mayor,

As you would be aware, the Newman Government is committed to making Queensland the most disaster resilient state in Australia.

As part of this, the Department of Natural Resources and Mines established the *Queensland Flood Mapping Program* to provide local councils with comprehensive, up-to-date flood mapping to help them better mitigate, prepare, respond and recover from flood disasters.

To date, the Program has delivered localised, fit-for-purpose flood mapping for over 100 flood-prone Queensland communities and continues to roll out mapping to for a further 75 communities. In addition to this excellent work, the Program has recently developed a new flood mapping implementation kit to help Queensland communities better manage flood risk and recover from flood events.

The **Flood Ready Queensland – Flood Mapping Implementation Kit** is aimed at assisting local councils, their disaster management teams and other stakeholders use flood mapping to deliver a more integrated approach to managing flood risk and improving community and business resilience to flood events.

The implementation kit has been developed around nine (9) key themes plus check list action plans for each of the themes: land use planning, coastal management, building controls, structural works, infrastructure, landscape and environment, education and information, emergency management and insurance.

We believe that flood mapping data can be incorporated into council geospatial information systems to provide an information layer for all council activities, including local planning schemes, to better articulate flood hazard and determine strategic land use planning and local building controls.

Effective use of this flood mapping can improve community safety, improve business and community resilience to flood events, and better prepare local disaster management groups to

COPY & ATTACH ✓ 32 8/5

VIEW	MAYOR	AGENDA	C12
CFO	DESIGN	DATE	16-12-14
GIS	TECH	APPLIC #	
NOTED		PROP #	
TENDER		LAND #	
ACTION			
DEADLINE			

respond to flood events. Importantly, the insurance industry can use this flood mapping and property information to more accurately assess flood risk and deliver more affordable insurance premiums.

In addition, I would like to advise that the *Queensland Flood Mapping Program* recently won recognition for its innovative approach and contribution to building community resilience against natural disaster, and was announced the winner of the 2014 Get Ready Queensland Resilient Australia Awards in the State and Territory Government category.

I believe that the use of the flood mapping implementation kit will provide your Council with an excellent start when implementing flood studies, ensuring that a holistic approach is undertaken.

If you would like to know more information about the Program or the implementation kit, please contact Graeme Milligan, Project Director – QFMP on 07 389 63225 or by email at [Graeme.Milligan@dnrm.qld.gov.au](mailto:Graeme.Milligan@dnrm.qld.gov.au).

Yours faithfully

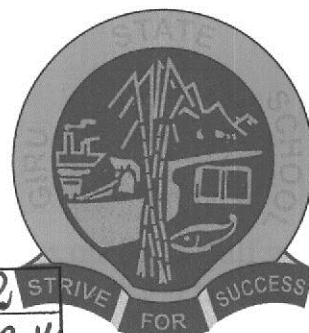
A handwritten signature in black ink that reads "Andrew Cripps". The signature is written in a cursive, slightly slanted style.

**Andrew Cripps**  
Minister for Natural Resources and Mines

***Giru State School***  
***Parents and Citizens Association***  
Luxton Street, GIRU QLD 4809

President: D Gallego  
Secretary: K Johnson

Vice President: T Town  
Treasurer: M Marson



Burdekin Shire Council  
P.O. Box 974  
Ayr Qld 4809

19 November 2014

VIEW		AGENDA	C12
		DATE	16.12.14
NOTED		APPLIC #	
TENDER		PROP #	
ACTION	CGM DEV	LAND #	
DEADLINE			

BURDEKIN SHIRE COUNCIL
File ID No. ....
27 NOV 2014
Document No. ....
Retention Period ....

Attention: CEO Burdekin Shire Council

The Giru State School P&C Association is writing to seek additional financial assistance to ensure the Giru Pool remains available to all members of the community.

In the past the council has provided us with an annual contribution to assist us in ensuring the pool remains available to the wider Giru Community as well as the school. Last year's contribution from Council was \$6434.

In recent times we have had significant increases in the expenses required for the operation of the pool. The price of chemicals, electricity, maintenance and cleaning have all increased significantly. We have recently had to purchase a new commercial pool cleaner and testing kit, costing the P&C Association \$6444, this along with a number of other maintenance expenses due to the aging nature of the Giru Pool is making it extremely difficult for the P&C to fund. We contribute financial help in numerous areas towards the Giru State School and the cost of the pool is cutting into our finances, which in turn lessens our ability to provide other necessities for our students.

However, the item of most significance is the increase to the insurance and the ability to access insurance for the pool to cover public use of the pool.

If the community were not accessing the pool, our pool insurance would be covered under the current Department of Education cover. However, as we allow access to the community we are required to have additional insurance that has been increasing over the last two years. Below are the insurance prices we have been paying for the last five years.

2009 - \$2099

2010 - \$2100

***Our mission is to create a caring and creative environment that allows for the development of the individual academically, physically, socially and emotionally to their maximum potential.***

2011 - \$2100  
2012 - \$2100  
2013 - \$3300  
2014 - \$3730

When an insurance broker sought alternative insurance options on our behalf we were knocked back by 15 insurance firms. It leaves us with no alternative but to seek extra assistance from the council to ensure that we can maintain access to the pool for the local community. We feel that it is a vital asset to the Giru and outlying community members. The community access the pool for exercise, swimming lessons, for social occasions and for community events. It promotes healthy lifestyles, water safety in an area that is subjected to flooding and contains channel and water systems.

The Giru State School and P&C Association work together closely to maintain the pool to a high standard. The P&C need to know if this extra assistance will be provided by the Burdekin Shire Council to help us maintain public access to the Giru Pool. If we are unable to obtain extra funding, we may have no choice but to restrict public access to the facility. As stated previously the school would be covered under the Department of Education Insurance. The Giru community and outlying areas contribute significant rates to the Burdekin Shire council and in light of your contribution to other pools in the shire we believe this is not an unreasonable request.

We would appreciate your assistance to ensure we can maintain our current commitment of access to the pool for the community. Should you require any further information regarding financial information, please do not hesitate to contact our Treasurer – Marina Marson on 0427829695. We look forward to your reply in the near future.

Yours sincerely,



Karyn Johnson  
Secretary  
Giru State School P&C Association

*Our mission is to create a caring and creative environment that allows for the development of the individual academically, physically, socially and emotionally to their maximum potential.*



27 November 2014

Cr Bill Lewis  
Mayor  
Burdekin Shire Council  
PO Box 974  
AYR Q 4807

BURDEKIN SHIRE COUNCIL	
File ID No.	402
9 DEC 2014	
Document No.	
Retention Period	

Dear Cr Lewis

**Release of New Course – Diploma of Local Government (Elected Member)**

LGAQ has a proud history of offering elected members throughout Queensland a range of professional development opportunities.

Currently, LGAQ offers a number of learning opportunities including the Elected Member Update Program (EMU) which provides elected members with updates on changes in the industry and provides a forum to discuss issues of relevance with councils.

The LGAQ Annual Conference, Finance Summit and the bi-annual Civic Leaders Forum also provide important opportunities to participate in a range of diverse professional development activities.

In response to member requests, LGAQ is proud to now announce the launch of a new nationally accredited course, specifically designed for councillors; the Diploma of Local Government (Elected Member). This course has been developed in close consultation with our sister organisation WALGA who has been offering a similar program for a number of years.

The course consists of 12 units each delivered in a one day course.

Key units include:

- Change Management
- Governing Councils
- Effective Community Leadership
- Strategic Planning
- Financial Reports and Budgets
- Rates and Charges
- Land Use Planning
- Sustainable Asset Management.

VIEW	MAYOR	AGENDA	C12
	CEO	DATE	16.12.14
NOTED		APPLIC #	
TENDER		PROP #	
ACTION		LAND #	
DEADLINE			

This course is delivered by highly qualified and experienced individuals who have been hand selected by LGAQ. For more information on each of these units please refer to the LGAQ Elected Member Program brochure **attached** to this correspondence.

Courses are offered throughout the year in blocks of two days, and also at the 2015 Finance Summit and 2015 Annual Conference. A copy of the 2015 enrolment form is **attached**.

There has been strong interest in the course since its launch at the 2014 LGAQ Annual Conference. We are keen to offer courses in a larger number of regional centres if there is sufficient demand. Please let us know if you are interested in courses in particular locations and we will endeavour to schedule these.

If you have any queries regarding this course or are interested in any other professional development opportunities that LGAQ offers, please do not hesitate to contact us on 1300 542 700 or email us at [ask@lgaqtotalsolutions.com.au](mailto:ask@lgaqtotalsolutions.com.au)

Yours sincerely

A handwritten signature in black ink, appearing to read 'G Hallam', written in a cursive style.

Greg Hallam PSM  
CHIEF EXECUTIVE OFFICER

Attach  
gh:nh



## **LGAQ ELECTED MEMBER PROGRAM**

**DIPLOMA OF LOCAL GOVERNMENT  
(ELECTED MEMBER) LGA50712**

LGAQ Total Solutions has developed a Diploma qualification specifically to meet the needs of the elected members in Queensland – the Diploma of Local Government (Elected Member) LGA50712.

The Diploma content covers areas that directly relate to the roles and responsibilities of elected members and will provide a nationally recognised qualification specifically for councillors and mayors.

### **TOPICS COVERED:**

- Understanding Local Government
- Councillor Roles and Responsibilities
- Effective Decision Making
- Governing Councils
- Effective Community Leadership
- Strategic Planning
- Financial Reports and Budgets
- Change Management
- Rates and Charges
- Land Use Planning
- Sustainable Asset Management
- Manage Conflict

The Diploma program has been specifically designed to be flexible and enables participants to complete studies via a series of tasks, projects and workplace activities which gather evidence of your skills and knowledge.

The Diploma program takes a modularised approach to suit a busy work schedule. Participants can undertake courses and associated assessments in any order, which enables them to demonstrate competence as they progress through the program.

There is also the option of completing two core units to complete the Elected Member Skill Set LGASS00002. The completion of this Skill Set provides a pathway into the Diploma of Local Government LGA50712

### **ASSESSMENT**

It is not compulsory to complete the post course assessments if participants decide to opt for the 'learning-only' pathway. In this case, instead of a national qualification a Statement of Attendance will be issued.

Participants who are seeking to achieve the Diploma of Local Government (Elected Member) LGA50712 qualification must complete the appropriate assessments for each unit. Assessment attracts an additional charge of \$220 per unit.

An 'assessment-only' pathway is also available for participants who qualify for Recognition of Prior Learning. A Student Information Pack will be made available to all prospective students before enrolment.

## UNDERSTANDING LOCAL GOVERNMENT

*Understanding Local Government* provides a broad introduction to working effectively in a local government environment. The unit covers a wide range of issues including code of conduct, health and safety basics, working within council policy and procedures.

### UNITS COVERED

Work effectively in local government LGACORE104B

Work with others in local government LGACORE105B

### CONTENT

Topics covered within this unit include: code of conduct, workplace health and safety principles, council policy and procedures, effective workplace relationships and communication skills.

### LEARNING OUTCOMES

As a result of attending this unit, participants should be able to:

- work effectively with other councillors and council staff
- understand policy and procedure frameworks.

Cost: \$530 (GST exempt)

Duration: 1 day

## COUNCILLOR ROLES AND RESPONSIBILITIES (SKILL SET)

*Councillor Roles and Responsibilities* covers the behaviours and actions required of elected members in meeting their roles and responsibilities.

Using legislation as its basis, the units explore in practical ways how the framework of laws, regulations, and codes create a clear path that guide the steps of elected members and help them to carve out a successful role at council and within the community.

### UNITS COVERED

Perform role of Elected Member LGAGENE503

Undertake councillor roles and responsibilities LGAGENE501A

### CONTENT

Topics covered within these units include: powers and influences; roles, responsibilities and jurisdiction; expectations of elected members; meetings, chairmanship, debating and public communication; and decision making and handling conflicts of interest.

### LEARNING OUTCOMES

As a result of attending these units, participants should be able to:

- demonstrate awareness of roles and responsibilities in the performance of council activities
- conduct productive meetings in line with compliance requirements
- uphold council's legislative responsibilities.

Cost: \$530 (GST exempt)

Duration: 1 day

## EFFECTIVE DECISION MAKING (SKILL SET)

*Effective Decision Making* principally explores decision-making processes and the capabilities required by those in positions of authority within council. It recognises the impact of personal and community influences upon councillors when making clear and strong decisions.

### UNIT COVERED

Contribute to effective decision making LGAGENE302A

### CONTENT

Topics covered within this unit include: identifying problems which need responses, developing solutions, evaluating solutions and implementing decisions.

### LEARNING OUTCOMES

As a result of attending this unit, participants should be able to:

- research factors impacting on problems
- evaluate options in relation to a range of factors
- develop a range of options
- effectively implement decisions.

Cost: \$530 (GST exempt)

Duration: 1 day

## GOVERN COUNCILS

*Govern Councils* focuses on how councillors can ensure that high levels of governance are applied in a complex environment. The unit explores management of processes, public accountability, ethical behaviour, transparency and statutory compliance.

### UNIT COVERED

Govern Councils LGAGCM701A

### CONTENT

Topics covered within this unit include: understanding the legal and regulatory requirements affecting council, principals of ethical conduct and working with governance systems.

### LEARNING OUTCOMES

As a result of attending this unit, participants should be able to:

- analyse legal and regulatory requirements
- research and apply best practice
- manage governance processes
- report appropriately within council structures.

Cost: \$530 (GST exempt)

Duration: 1 day

## EFFECTIVE COMMUNITY LEADERSHIP

*Effective Community Leadership* focuses on the skills that councillors require to work successfully with other organisations in the community.

### UNIT COVERED

Establish co-operative arrangements with other organisations LGACOM404B

### CONTENT

Topics covered within this unit include: identifying opportunities for cooperative arrangements, development of cooperative projects and monitoring and evaluating effectiveness of a collaborative venture.

### LEARNING OUTCOMES

As a result of attending this unit, participants should be able to:

- develop co-operative projects
- measure project performance
- structure projects to meet community needs
- develop communications plans.

Cost: \$530 (GST exempt)

Duration: 1 day

## STRATEGIC PLANNING

*Strategic Planning* uses existing legislation as its basis to explore the way in which local governments are required to plan for the future. Legislation establishes links between planning objectives, funding and reporting. Links are explored between operational and strategic business planning, land use planning, policy development and major strategy documents such as asset management and infrastructure plans.

### UNIT COVERED

Undertake business planning LGADMIN525A

### CONTENT

Topics covered within this unit include: putting operational and strategic planning in perspective, the integrated business planning and reporting framework, the analysis and consultation process, and formulation and implementation of a strategic plan.

### LEARNING OUTCOMES

As a result of attending this unit, participants should be able to understand:

- the strategic planning process
- integrated business planning and reporting
- analysis and consultation
- formulation and implementation of a strategic plan.

Cost: \$530 (GST exempt)

Duration: 1 day

## FINANCIAL REPORTS AND BUDGETS

*Financial Reports and Budgets* explore the way in which local governments are required to plan for the future, develop an annual budget and monitor, review and interpret financial reports. The unit outlines the linkage between strategic planning, asset management planning and long term financial planning so participants gain an understanding of the benefits of undertaking financial forecasting and the impacts key decisions may have on the organisation's financial bottom line.

### UNIT COVERED

Analyse financial reports and budgets BSBGOV403A

### CONTENT

Topics covered within this unit include: the legislative requirements for local government accounting, understanding budget documents, familiarisation with budget processes and discussing accounting terms and financial reports.

### LEARNING OUTCOMES

As a result of attending this unit, participants should be able to understand:

- basic accounting principles and concepts
- the roles and responsibilities of council, councillors and the CEO
- financial management and the strategic linkages
- annual budgets
- financial management and reporting.

Cost: \$530 (GST exempt)

Duration: 1 day

## CHANGE MANAGEMENT

*Change Management* includes planning for and initiating organisational change. It stresses the leadership role of the council in sponsoring change and recognises that there is a need for the council and the CEO to work together to achieve significant change. The council must introduce change using its legislated role and act within jurisdiction at all times.

### UNIT COVERED

Coordinate and facilitate a change process LGACOM602B

### CONTENT

Topics covered within this unit include: identifying and implementing change management strategies and cause and effects and change.

### LEARNING OUTCOMES

As a result of attending this unit, participants should be able to:

- understand the change environment
- establish need for change
- evaluate and monitor change programs
- plan change
- facilitate change.

Cost: \$530 (GST exempt)

Duration: 1 day

## RATES AND CHARGES

*Rates and Charges* outlines the range of rating options available to council. Rates form a major portion of council revenues and are an important area of focus for councils. In making changes to rating provisions, councils must bear in mind legislative and regulatory requirements as well as existing council policies. Participants will be provided with a sound understanding of the principles and processes in levying rates and charges.

### UNIT COVERED

Recommend rates and charges LGAGOVA508A

### CONTENT

Topics covered within this unit include: the options and methods of rating and rating differentiation, legislative and regulatory requirements in applying rating and processes for revising rates and charges.

### LEARNING OUTCOMES

As a result of attending this unit, participants should be able to:

- identify major legislative and policy provisions impacting on rates
- evaluate rating options
- understand rating structure options
- make decisions concerning council policy changes.

Cost: \$530 (GST exempt)

Duration: 1 day

## LAND USE PLANNING

*Land Use Planning* is a function of local government that places one of the greatest demands upon elected members and can be one of the most difficult areas to deal with. Ordinary council meeting agendas are typically dominated by planning items and often deal with complex issues that may generate a great deal of interest and controversy within the local community. It is important for elected members to have a thorough understanding of what the purpose of planning is and how the process of planning is managed in order to meet the expectations of the community.

### UNIT COVERED

Manage council's development assessment system LGAPLAN511A

### CONTENT

Topics covered within this unit include: an introduction to land use planning, various roles and responsibilities, types of legislation, regional planning instruments, local planning instruments and community consultation processes.

### LEARNING OUTCOMES

As a result of attending this unit, participants should be able to:

- understand the purpose of land planning
- define the role of Elected Members in land use planning
- identify relevant legislation and understand its impact
- understand the planning and development process
- identify and understand local and regional planning instruments and issues.

Cost: \$880 (GST exempt)

Duration: 1 day

## SUSTAINABLE ASSET MANAGEMENT

*Sustainable Asset Management* will assist elected members in understanding asset management issues in three key ways: understanding your stewardship responsibilities, knowing what your community can afford and the need to move from annual budgeting to long term planning. Sustainable asset management is the combination of management, physical, financial, economic, engineering and other practices applied to physical assets with the objective of providing the required levels of service in the most cost effective manner.

### UNIT COVERED

Develop an asset management strategy for council LGAGOVA605A

### CONTENT

Topics covered within this unit include: annual budgeting, budgeting constraints, long term financial planning, risk analysis, asset management plans, stewardship, community affordability and sustainable services.

### LEARNING OUTCOMES

As a result of attending this unit, participants should be able to:

- identify the risks associated with the management of infrastructure assets
- understand the life cycle costs of infrastructure asset
- identify the revenue gap
- develop a plan for financial sustainability.

Cost: \$530 (GST exempt)

Duration: 1 day

## MANAGE CONFLICT

*Manage Conflict* provides the skills to manage conflict within the council, and between the local government and the wider community. This unit will enable elected members to identify common communication roadblocks, the source of conflicts within the council and develop techniques for resolving conflict situations.

### UNIT COVERED

Manage conflict BSBATSIL503C

### CONTENT

Topics covered within this unit include: understanding and respecting the difference between governance and operational matters, communication and conflict resolution ideas and the development of an action plan to implement better channels of communication.

### LEARNING OUTCOMES

As a result of attending this unit, participants should be able to:

- assess the potential for conflict
- identify existing conflict
- consider the conflict situation
- carry out strategies to resolve conflict.

Cost: \$530 (GST exempt)

Duration: 1 day



## LGAQ ELECTED MEMBER PROGRAM

DIPLOMA OF LOCAL GOVERNMENT  
(ELECTED MEMBER) LGA50712

### DIPLOMA OF LOCAL GOVERNMENT (ELECTED MEMBER) COURSE STRUCTURE

Units	Course Duration	Diploma Units of Competence
Understanding Local Government	1 day	LGACORE104B LGACORE105B
Councillor Roles and Responsibilities (Skill Set)**	1 day	LGAGENE501A LGAGENE503
Effective Decision Making (Skill Set)**	1 day	LGAGENE302A
Governing Councils	1 day	LGAGCM701A
Effective Community Leadership	1 day	LGACOM404B
Strategic Planning	1 day	LGADMIN525A
Financial Reports and Budgets	1 day	BSBGOV403A
Change Management	1 day	LGACOM602B
Rates and Charges	1 day	LGAGOVA508A
Land Use Planning*	1 day	LGAPLAN511A
Sustainable Asset Management	1 day	LGAGOV605A
Manage Conflict	1 day	BSBATSIL503C

### SCHEDULE OF FEES

Qualification	Price (GST exempt)
Course Fee (per day)	\$530.00*
Assessment Fee (per unit of competence)	\$220.00
Recognition of Prior Learning/RPL Fee (per unit of competence)	\$395.00

\*Land use planning unit \$880

\*\* Skill Set: These two units create Skill Set LGASS00002 Elected Member Skill Set. The completion of this Skill Set provides a pathway into the Diploma of Local Government LGA50712.

### TO REGISTER

For further information or to register your interest, email the training team on [training@lgaq.asn.au](mailto:training@lgaq.asn.au) or phone 1300 542 700.



Local government solutions from the local government experts

## DIPLOMA OF LOCAL GOVERNMENT (ELECTED MEMBER) 2015 ENROLMENT FORM

**Candidate**

Contact Name: \_\_\_\_\_

Title: \_\_\_\_\_

USI: \_\_\_\_\_

Organisation: \_\_\_\_\_

Address: \_\_\_\_\_

Phone: \_\_\_\_\_

Fax: \_\_\_\_\_

Email: \_\_\_\_\_

LGAQ is happy to arrange more courses in regional centres with sufficient demand, or run dedicated in-house courses for your council. Simply fill out the 'Request for customized training arrangements' section over the page and LGAQ will be in contact to discuss your specific requirements.

			Course \$530 (\$880 Land use) PLEASE TICK	Assessment \$220 per course PLEASE TICK
Sustainable Asset Management – Elected Member (Accredited)	22/01/2015	Townsville		
Financial Reports and Budgets – Elected Member (Accredited)	23/01/2015	Townsville		
Land use Planning – Elected Member (Accredited)	19/02/2015	Cairns		
Rates and Charges – Elected Member (Accredited)	20/02/2015	Cairns		
Strategic Planning – Elected Member (Accredited)	05/03/2015	Brisbane		
Change Management – Elected Member (Accredited)	06/03/2015	Brisbane		
Effective Community Leadership – Elected Members (Accredited)	21/04/2015	GFS*		
Governing Councils – Elected Member (Accredited)	23/04/2015	GFS*		
Manage Conflict – Elected Member (Accredited)	23/04/2015	GFS*		
Understanding Local Government – Elected Member (Accredited)	11/05/2015	Brisbane		
Councillor Roles and Responsibilities – Elected Member (Accredited)	12/05/2015	Brisbane		
Land use Planning – Elected Member (Accredited)	11/06/2015	Brisbane		
Rates and Charges – Elected Member (Accredited)	12/06/2015	Brisbane		
Effective Decision Making – Elected Member (Accredited)	20/07/2015	Brisbane		
Strategic Planning – Elected Member (Accredited)	21/07/2015	Brisbane		
Sustainable Asset Management – Elected Member (Accredited)	20/08/2015	Brisbane		
Effective Community Leadership – Elected Member (Accredited)	21/08/2015	Brisbane		
Rates and Charges – Elected Member (Accredited)	17/09/2015	Brisbane		
Manage Conflict – Elected Member (Accredited)	18/09/2015	Brisbane		
Councillor Roles and Responsibilities – Elected Member (Accredited)	19/10/2015	TC**		
Financial Reports and Budgets – Elected Member (Accredited)	19/10/2015	TC**		
Change Management – Elected Member (Accredited)	19/10/2015	TC**		
Effective Community Leadership – Elected Member (Accredited)	19/11/2015	Brisbane		
Governing Councils – Elected Member (Accredited)	20/11/2015	Brisbane		

**Each course is a full day.**

\*Gold Coast Finance Summit    \*\* Toowoomba Conference

## Local government solutions from the local government experts

### Requests for customized training arrangements

Course(s): \_\_\_\_\_

Preferred Date(s): \_\_\_\_\_

Preferred Location(s): \_\_\_\_\_

Number of attendees: \_\_\_\_\_

Please add additional detail in an email if required to [training@lgaq.asn.au](mailto:training@lgaq.asn.au)

*\*Please note that all LGAQ courses and programs are subject to confirmation based on minimum registration numbers.*

### Authorising Manager

Contact Name: \_\_\_\_\_

Title: \_\_\_\_\_

Phone: \_\_\_\_\_

Email: \_\_\_\_\_

### Accounts payable

Contact Name: \_\_\_\_\_

Title: \_\_\_\_\_

Phone: \_\_\_\_\_

Email: \_\_\_\_\_

### Terms and conditions

☐ I accept the terms and conditions contained in this document (below)

Authorising Signature: \_\_\_\_\_

Date: \_\_\_\_\_

PO#: \_\_\_\_\_

### Office use only

S/Form/Rex	
C/Sent	
I/Sent	
M/Ordered	
C/Delivery	
A/Complete	
T/Advice	
USI Verified	
Misc.	

#### TERMS AND CONDITIONS

##### 1. Agreement

The Purchaser agrees to purchase the courses or consulting services scheduled for the dates and times as specified in the Booking Form.

##### 2. General

LGAQ reserves the right to change course schedules, course pricing, discontinue courses, modify course content, limit class size or cancel courses prior to course confirmation. The Purchaser will be notified by email should any of these details be changed.

##### 3. Course Confirmation

All courses or consulting services delivered at the Purchaser's nominated venue or at LGAQ's nominated venue will be confirmed by email by LGAQ approximately 10 working days prior to commencement (or earlier where possible). The Purchaser is advised not to make accommodation or travel arrangements until an LGAQ course confirmation has been received. LGAQ shall not be liable for any costs or damages suffered by the Purchaser or Participants as a result of any cancellation or delays in delivery of any course where a course confirmation has not been issued by LGAQ.

##### 4. Scheduling Courses

LGAQ will specify the dates of publicly scheduled or onsite training events. LGAQ may cancel any training event on notice. If this occurs, and the purchaser has pre-paid, LGAQ will refund the course fee paid.

##### 5. Cancellation and Transfer

- Prior to course confirmation, cancellations may occur at any time
- After course confirmation, payment in full will be required
- Participant substitution on training courses is free of charge at any time (the substitute participant is required to meet the published course prerequisites, where applicable)
- Substitutions, cancellations and transfers (for training) will only be accepted in writing or via email ([ask@lgaqtotalsolutions.com.au](mailto:ask@lgaqtotalsolutions.com.au)).

##### 6. Registration Changes

All changes to registration details must be made in writing or via email ([ask@lgaqtotalsolutions.com.au](mailto:ask@lgaqtotalsolutions.com.au)).

##### 7. Course Fees

LGAQ will invoice for any training events post training delivery. For nationally recognised qualifications, invoices are forwarded after our first block of training days. All invoices are payable within 30 days.

##### 8. Course Prerequisites

Participants must comply with published course prerequisites.

##### 9. Authorisation

The Purchaser hereby certifies that all Participants are employed by, or are under contract to the Purchaser and undertakes to bring these Terms and Conditions to the attention of Participants.

##### 10. Copyright

The copyright of all course material and publicity material is invested, except where stated and may not be reproduced in whole or in part, recorded, loaned, broadcast, stored in a retrieval system or displayed publicly without prior permission.

##### 11. Unique Student Identifier (USI)

The Unique Student Identifier (USI) is a requirement for all candidates undertaking national qualifications from 1 January 2015. For further information on applying for a USI visit <http://www.industry.gov.au/skills/National/UniqueStudentIdentifierForVET/Pages/ApplyingForAUSI.aspx>